



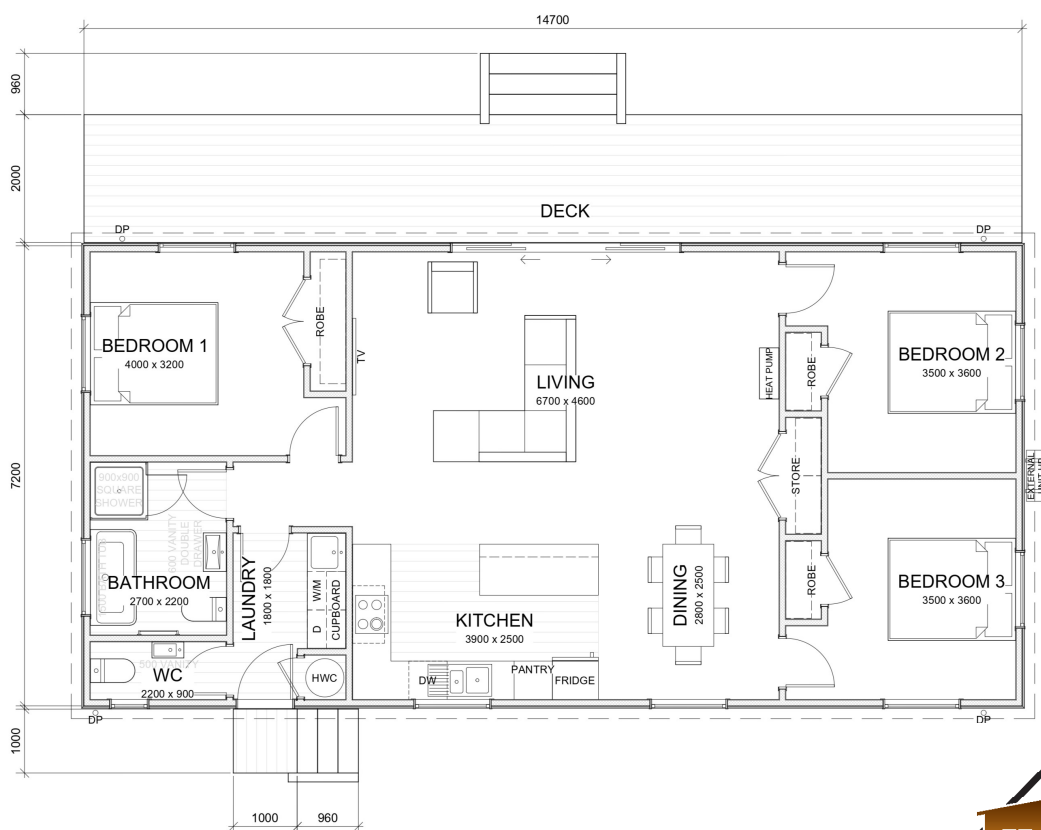




-  14.7m x 7.2m
-  Floor Area 106m²
-  3 Bedrooms
-  1 Bathroom
-  2 Toilets

CORONET

With a nice open plan layout and central living areas, this home is a modern spin on the great kiwi bach. The design allows for privacy to the master bedroom with easy access to the bathroom and kitchen. A large deck across the front gives extra room to enjoy the views.



(Images are artist impressions only & the landscaping is not included. This plan is available as a mono, gable or hip roofline. We can add or remove wing walls & adjust the cladding to suit your style. Plans are subject to change.)



SOUTH PEAK HOMES
from our place to your space