

GAS CONTINUOUS FLOW



Hot water for the whole family

STEADY, HOT & STRONG

INSTALL A RHEEM™

Go with the Flow[®]

WITH RHEEM GAS CONTINUOUS FLOW

Rheem gas continuous flow water heaters deliver hot water when you need it, for as long as you need it.¹

Unlike traditional storage water heaters, gas continuous flow water heaters only heat water on demand rather than heating and storing water until needed. Appliances can be conveniently mounted to, or recessed into, your exterior wall, taking up less space. They are ideal for homes with high peak loads or when hot water is required occasionally such as at a holiday home.

Either connected to Natural Gas or to ULPG storage bottles, the water temperature is pre-set on the appliance, or is adjustable with EZiSET[®] or with optional remote temperature controllers installed indoors.

In homes where there is a high demand for water, or in colder areas where ambient water temperature is low, two appliances can be linked together using the Rheem EZ Link[®] system to supply twice the flow.

HOW CONTINUOUS FLOW WORKS

The water heater operates automatically, heating the water as it passes through the appliance. When a hot tap is opened, the gas burners ignite to provide immediate heating of the water. The heat produced by the burner is transferred to the water through the heat exchanger. The gas burners extinguish when the hot tap is closed.

Rheem Gas Continuous Flow

- Flamesafe overheat protection
- 6 star energy rating
- Digital display for easy fault diagnosis and service
- Frost protection
- Rheem EZ Link[®] compatible to link two units for increased supply
- Indoor and outdoor models
- Control your water temperature with EZiSET[®] or remote controllers

16L - 27L per minute

Natural Gas or ULPG

¹Providing gas, water and power are available

Always ensure you use a registered professional for all your plumbing and gasfitting needs.



Gas Continuous Flow solutions for every home



Outdoor - Rheem 16

1–1.5 Bathrooms, 1–3 people

An ideal solution for compact home sites, baches, cribs or apartments.



Outdoor - Rheem 20

1.5–2 Bathrooms, 2–4 people

Medium capacity model ideal for small to medium sized homes and apartments.



Outdoor - Rheem 26

2–3 Bathrooms, 4–6 people

A popular model in more temperate areas, with the capacity to suit most homes.



Outdoor - Rheem 27

2.5–3 Bathrooms, 4–6 people

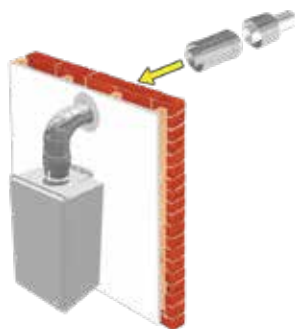
Our most popular capacity, ideal for larger families with limited space and high demands for hot water.



Indoor - Rheem 27

2.5–3 Bathrooms, 4–6 people

The only Rheem indoor gas continuous flow model (must be flued to the outside of the building).



Indoor Model Flue Kit

The Indoor model must be installed using a certified Rheem flue system. Always check with local authorities that the installation complies with all regulations applicable in your area.



EZiSET®

Set your ideal water temperature and bath level from your smartphone. Ask your plumber/gasfitter to install the EZiSET® control module, download the EZiSET® app and you're in control via your home wifi.



Recess Box

Recess box comes with door and mounting brackets to fit various models.



Pipe Cover

Designed to cover pipework and valves.



EZ Link® Kit

Links two units together and provides staged heating to reduce wear and energy use. Kit contains 1.8m cable and fittings.



Standard



Deluxe

Remote Temperature Controllers

Deluxe controllers offer a 'bath fill' function for added convenience and safety.

WHY CHOOSE RHEEM?



ENERGY EFFICIENT

All Rheem gas continuous flow water heaters have a 6 star energy rating.



FLAMESAFE OVERHEAT PROTECTION SYSTEM

Automatically shuts down the unit should a fault occur.



FROST PROTECTION

All models of gas continuous flow water heaters are frost protected down to -20°C (power must remain to the unit for the frost protection function to operate).



10 YEAR WARRANTY

Rheem offer a 10 year warranty on the heat exchanger and a 3 year warranty on parts and labour.



TWICE THE FLOW

Two units can be linked together using the Rheem Ezi Link® system to supply twice the flow. Ideal for homes with high water demand or in climates with cooler incoming water.



FULL TECH SUPPORT

Rheem has a national service and network of after sales professionals to provide expert technical advice and fast service.



YOU'RE IN CONTROL

Set your ideal water temperature and bath level with the new Rheem EZiSET®. Just ask your plumber/gasfitter to install the EZiSET® control module, download the EZiSET® app to your smartphone and you're in control via the security of your home wifi – it's that easy. (EZiSET® is compatible with all the models in this brochure)



Optional standard and deluxe temperature controllers allow easy setting of water temperatures. Deluxe controllers offer a 'bath fill' mode and shut off safety features.

COMMERCIAL PRODUCTS

Our commercial gas continuous flow water heater range includes a 82°C model. From luxury homes to the largest commercial hot water application imaginable, Rheem can deliver to any requirements

For more information visit www.rheem.co.nz or call 0800 657 336.

Trusted by Plumbers

Rheem New Zealand Limited

475 Rosebank Road, Avondale 1026
PO Box 19011, Avondale, Auckland 1746

Freephone 0800 657 336
www.rheem.co.nz

All specifications contained in this brochure are subject to change without notice.

Please check the specifications are current at the time of ordering.

All information is current at the time of publication (February 2019).

Apple, the Apple logo, iPhone, and iPad are trademarks of Apple Inc., registered in the U.S. and other countries and regions. App Store is a service mark of Apple Inc.

Google Play and the Google Play logo are trademarks of Google LLC.



STEADY, HOT & STRONG

INSTALL A RHEEM™

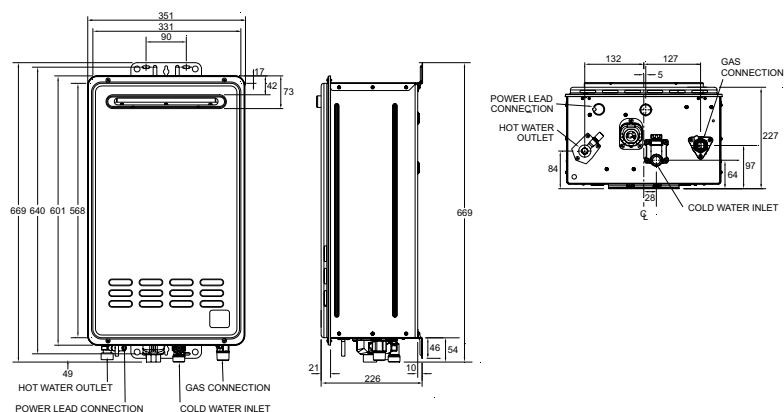
www.rheem.co.nz

Rheem Gas Continuous Flow Product Data

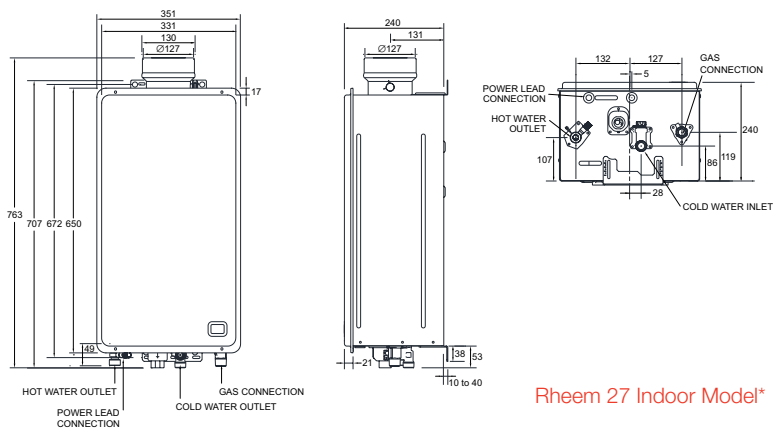


	Rheem 16	Rheem 20	Rheem 26	Rheem 27	Indoor 27*
Model Number	874816NFZ/LFZ	874820NFZ/LFZ	874826NFZ/LFZ	874627NFZ/LPZ	864627NFZ/LPZ
Nominal L/Min @25°C Rise	16L/Min	20L/Min	26L/Min	27L/Min	27L/Min
Gas Input Max	126 MJ/hr	157 MJ/hr	199 MJ/hr	205 MJ/hr	205 MJ/hr
Gas Type	NG or ULPG	NG or ULPG	NG or ULPG	NG or ULPG	NG or ULPG
Gas Connection	R ¾ / 20	R ¾ / 20	R ¾ / 20	R ¾ / 20	R ¾ / 20
Min Gas Supply Pressure NG/ULPG	1.13 kPa/ 2.75 kPa	1.13 kPa/ 2.75 kPa	1.13 kPa/ 2.75 kPa	1.13 kPa/ 2.75 kPa	1.13 kPa/ 2.75 kPa
Water Pressure (kPa) Min-Max	120-1000	120-1000	120-1000	140-1000	140 - 1000
Minimum Flow Rate	2.0L/Min	2.0L/Min	2.0L/Min	2.0 L/Min	2.0 L/Min
Cold Water Connection	R ¾ / 20	R ¾ / 20	R ¾ / 20	R ¾ / 20	R ¾ / 20
Hot Water Connection	R ¾ / 20	R ¾ / 20	R ¾ / 20	R ¾ / 20	R ¾ / 20
Approx. Weight (empty)	16kg	16kg	16kg	23kg	24kg
Freeze Protection	Yes	Yes	Yes	Yes	Yes

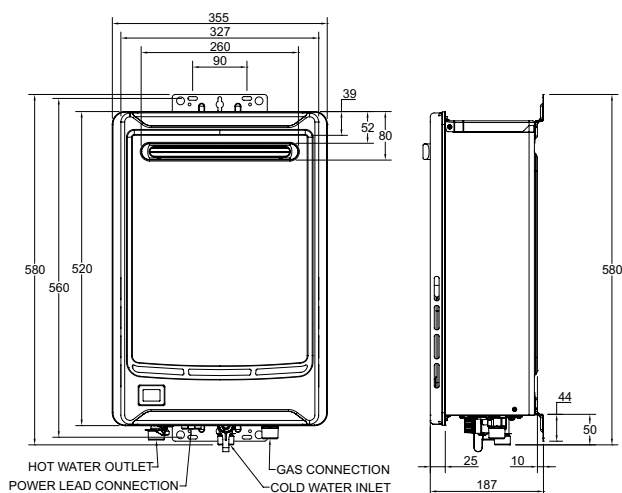
Continuous Flow Accessories	Part No.
Horizontal Flue Kit Side Exit	318278
Horizontal Flue Kit Rear Exit	318279
Vertical Flue Kit	318280
Recess Box - For Rheem 27	320316
Recess Box - For Rheem 16, 20 & 26	318994
Pipe Cover - For Rheem 27	320116
Pipe Cover - For Rheem 16, 20 & 26	320117
EZiSET® Kit	052310
EZ Link® Cable	290141
Standard Kitchen Temperature Controller	A299850
Standard Bathroom 1 Temperature Controller	A299851
Standard Bathroom 2 Temperature Controller	A299852
Deluxe Kitchen Temperature Controller	A299861
Deluxe Bathroom 1 Temperature Controller	A299862
Deluxe Bathroom 2 Temperature Controller	A299863



Rheem 27 Outdoor Model

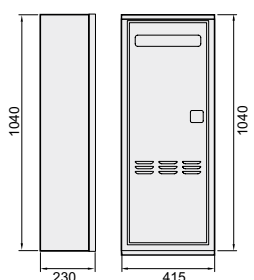


Rheem 27 Indoor Model*



Rheem 16, 20 & 26 Outdoor Models

Recess Box



*Rheem 27 Indoor Flue System

A certified Rheem coaxial flue system must be used with all Rheem 27 indoor models. There are three indoor flue kits available:- Horizontal Side Exit, Horizontal Rear Exit and Vertical. Please contact your local plumber, plumbing merchant or Rheem Customer Service on 0800 657 336 to discuss the best solution for your needs. The Rheem flue system uses a twin pipe design (one pipe inside the other) ; an inner pipe of stainless steel for exhaust, and an outer steel pipe for inlet air. This flue system can exhaust either through a roof or wall. (Subject to Building Regulations).

You'll love the convenience



STEADY, HOT & STRONG

INSTALL A RHEEM™

Image source: Voda Plumbingware