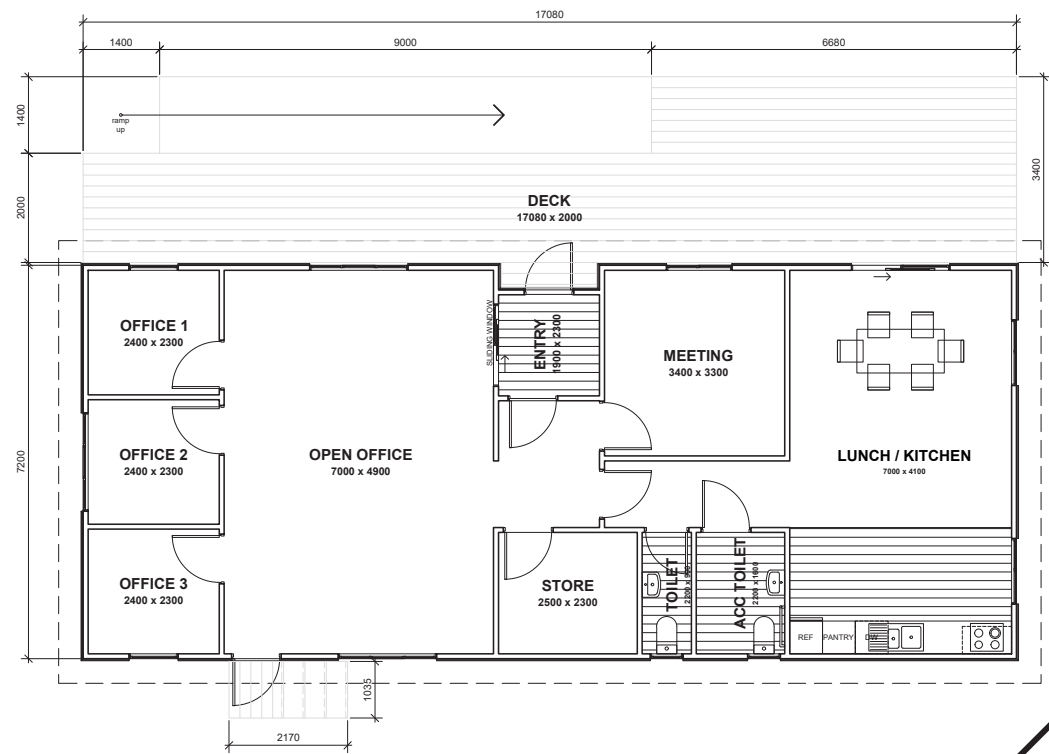




# VICTOR.17

-  17.08m x 7.2m
-  Floor Area 123m<sup>2</sup>
-  3 Offices
-  2 Toilets

The Victor office block series is a modern, practical and economical option, designed to maximize usability and create a dynamic working environment. They feature 3 dedicated office spaces, an open office area, meeting room, store/ server room, ACC toilet, separate toilet and a lunchroom.



**SOUTH PEAK HOMES**  
from our place to your space

(Images are artist impressions only & the landscaping is not included. This plan is available as a mono, gable or hip roofline. We can add or remove wing walls & adjust the cladding to suit your style. Plans are subject to change.)