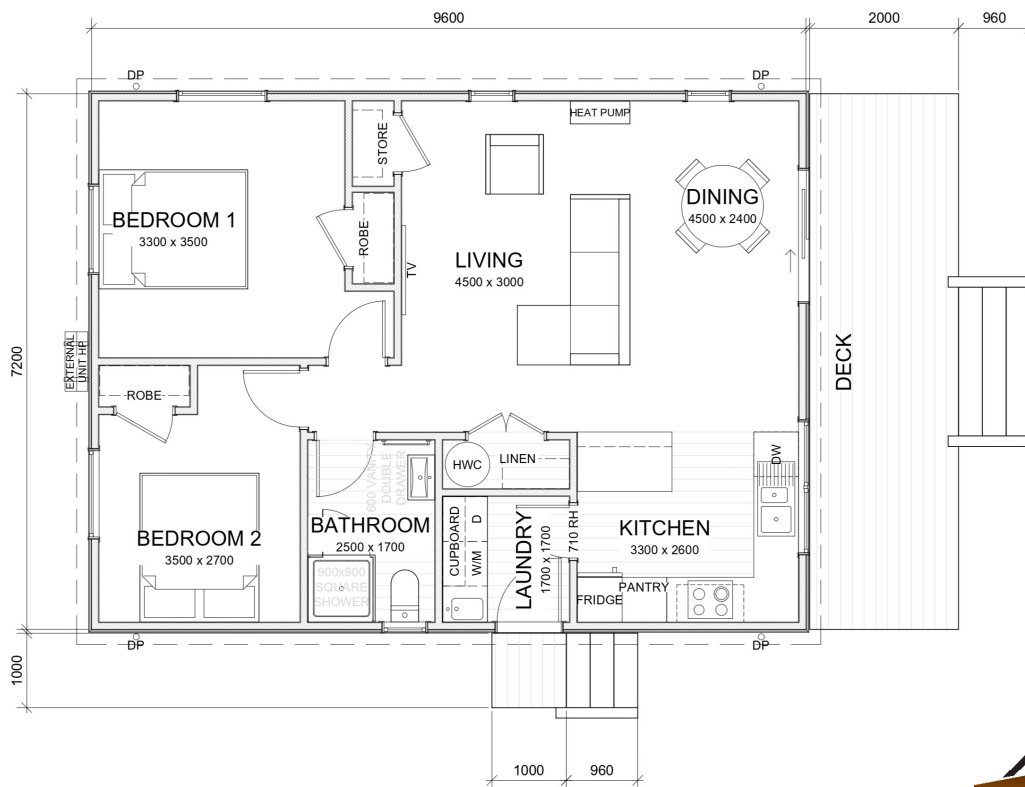




- 9.6m x 7.2m
- Floor Area 69m<sup>2</sup>
- 2 Bedrooms
- 1 Bathroom
- 1 Toilet

## SEFTON

When space is at a premium this compact and affordable home gives you all the comforts you need. It's a perfect choice for a small section, a first home, downsizing, a second dwelling on an existing property or to have the grandparents close by.



(Images are artist impressions only & the landscaping is not included. This plan is available as a mono, gable or hip roofline. We can add or remove wing walls & adjust the cladding to suit your style. Plans are subject to change.)



**SOUTH PEAK HOMES**  
from our place to your space