







ARROWSMITH.21

-  Floor Area 246m²
-  24 Beds
-  4 Bathrooms
-  4 Toilets



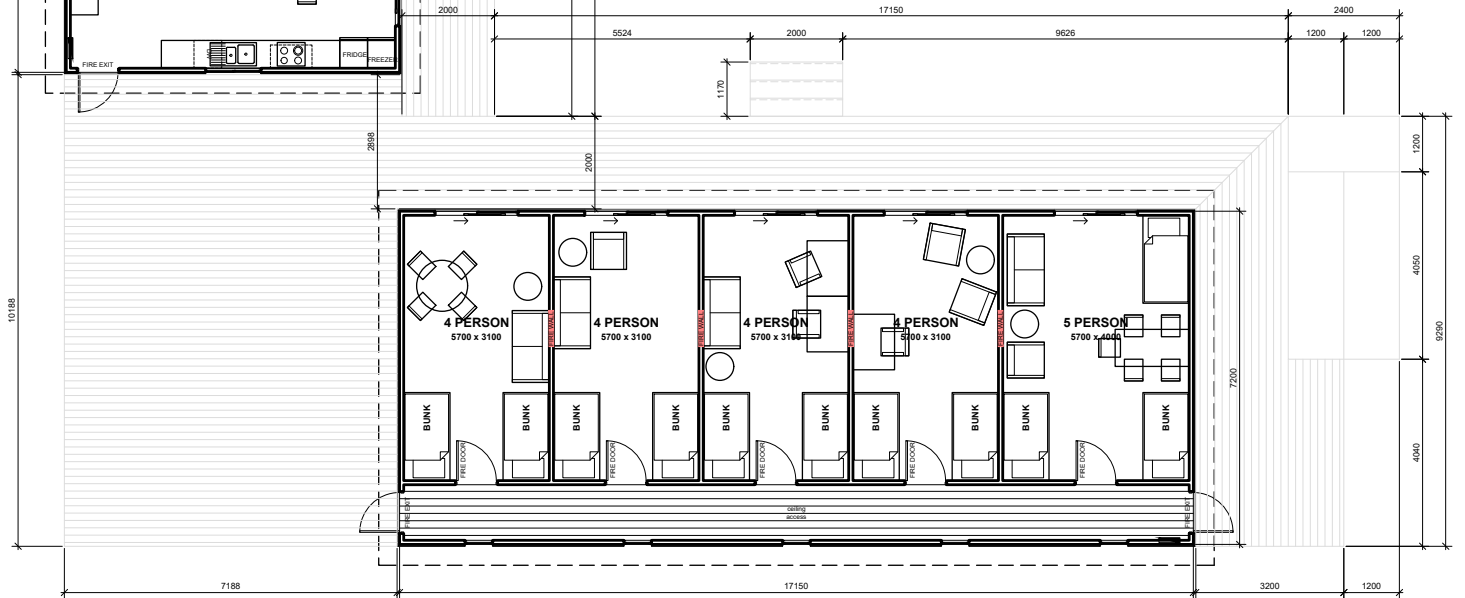
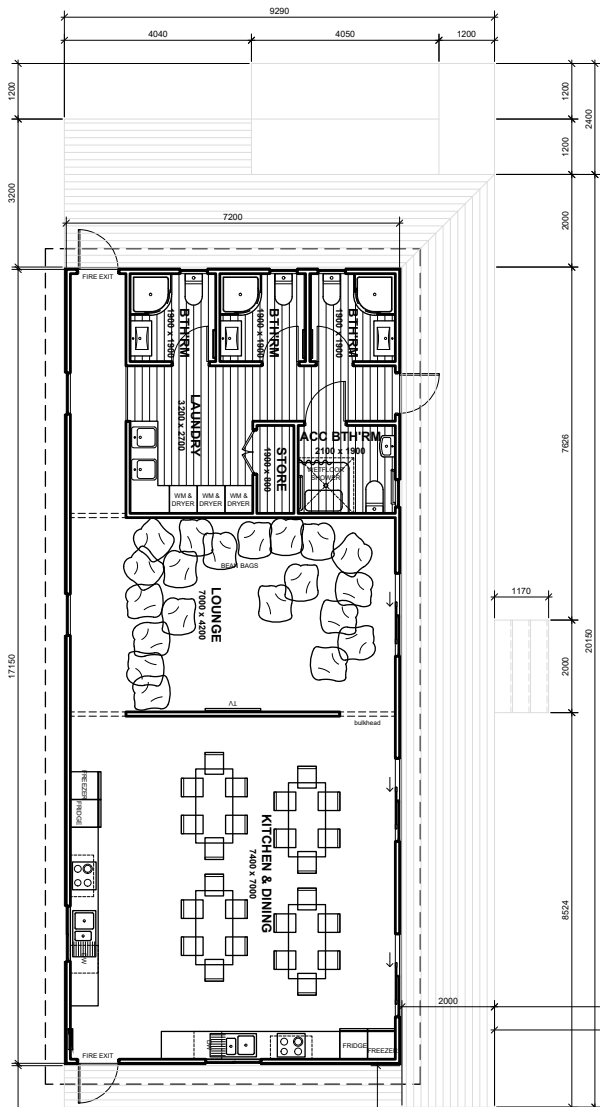
This multi-unit accommodation package is a great option for up to 21 people and comprises of 1x Living Block & 1x Sleeping Quarters. The Living Block has a large open plan kitchen/dining area, a semi-detached lounge area, a large ablution area with 4x full bathrooms and a large laundry space. The Sleeping Quarters have 4x four-person bunk rooms and 1x five-person bunk room. Verandahs, decking and siteworks can be arranged as required.

These units are designed to meet Worksafe New Zealand accommodation requirements, along with the Horticulture New Zealand survey and reports in mind. We've taken care of the appliances, furniture and storage spaces so you don't have to. Simply supply linen and everyday items and your staff or guests will enjoy a warm, dry & healthy living experience, maximizing your return on investment.

(Images are artist impressions only & the landscaping is not included. This plan is available as a mono, gable or hip roofline. We can add or remove wing walls & adjust the cladding to suit your style. Plans are subject to change.)



SOUTH PEAK HOMES
from our place to your space



(Images are artist impressions only & the landscaping is not included. This plan is available as a mono, gable or hip roofline. We can add or remove wing walls & adjust the cladding to suit your style. Plans are subject to change.)



SOUTH PEAK HOMES
from our place to your space

Call: 0800 678 989 | **Email:** sales@southpeakhomes.co.nz | **Visit:** southpeakhomes.co.nz