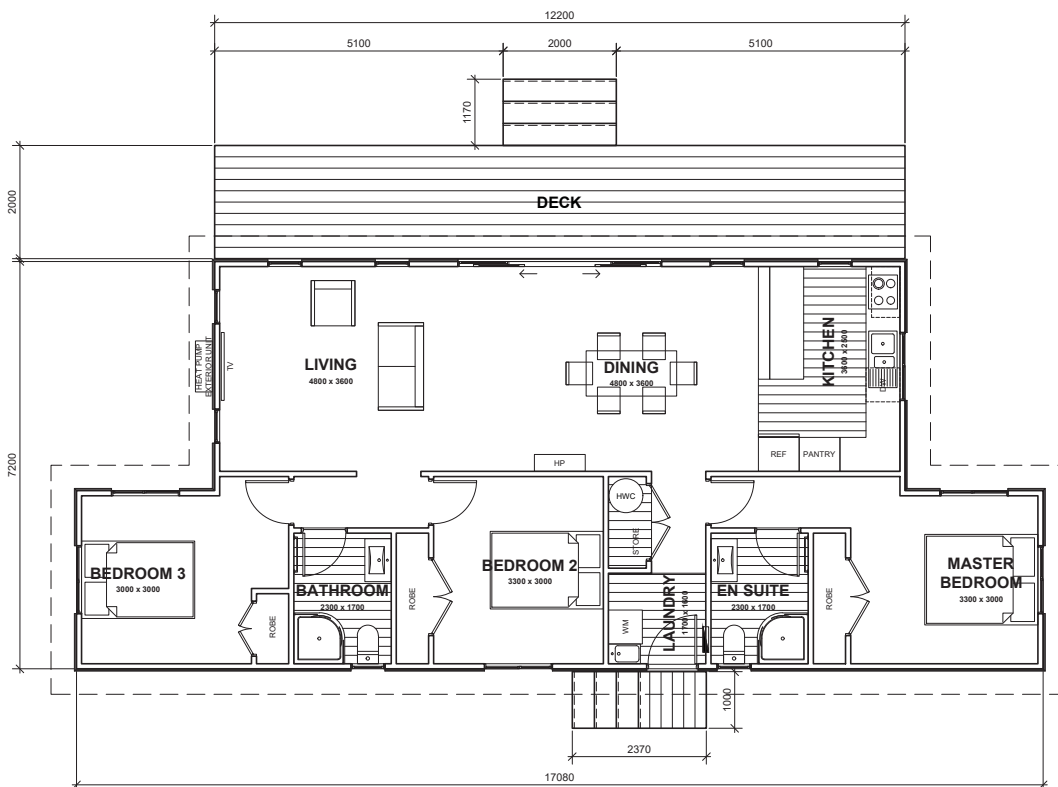




- ↕ 17.08m x 7.2m
- ⊠ Floor Area 106m²
- 🛏 3 Bedrooms
- 🚿 2 Bathrooms
- 🚽 2 Toilets

BUCKLAND

A great looking family home with the addition of an ensuite to give the grown-ups a little more of their own space. This design has nice open plan living and architectural lines that give it a modern contemporary feel.



(Images are artist impressions only & the landscaping is not included. This plan is available as a mono or gable roofline. We can add or remove wing walls & adjust the cladding to suit your style. Plans are subject to change.)



SOUTH PEAK HOMES
from our place to your space