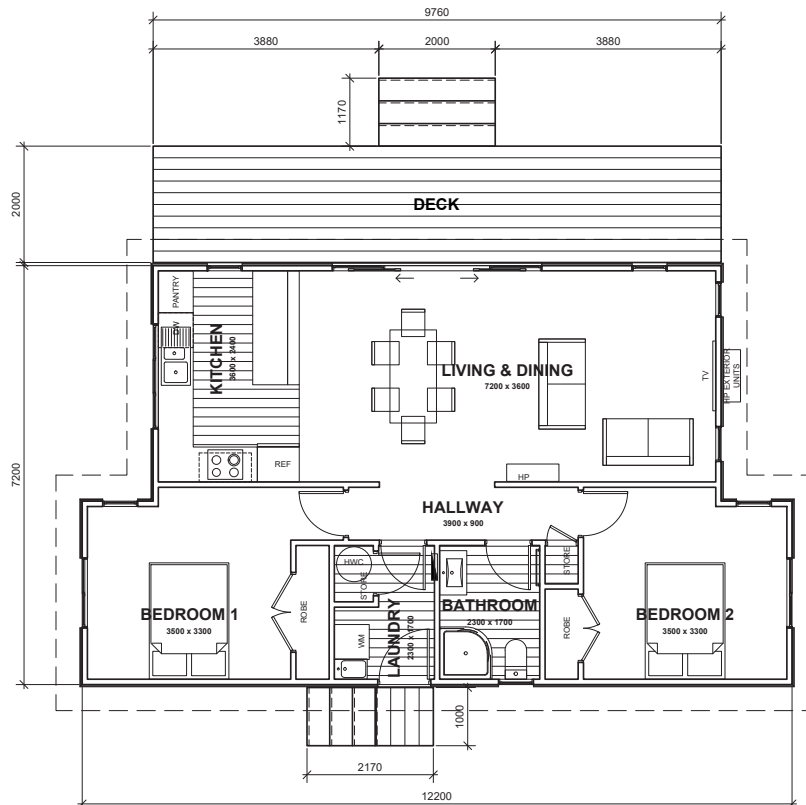




- ↕ 12.2m x 7.2m
- ⊠ Floor Area 80m²
- 🛏 2 Bedrooms
- 🚿 1 Bathroom
- 🚽 1 Toilet

GLASGOW

This popular dwelling has everything you need in just 80m². With open plan living & dining there's no wasted space and these areas are sure to benefit from any view. A great choice for a first home, a bach, accommodation units or if you're scaling down your house size.



(Images are artist impressions only & the landscaping is not included. This plan is available as a mono or gable roofline. We can add or remove wing walls & adjust the cladding to suit your style. Plans are subject to change.)



SOUTH PEAK HOMES
from our place to your space