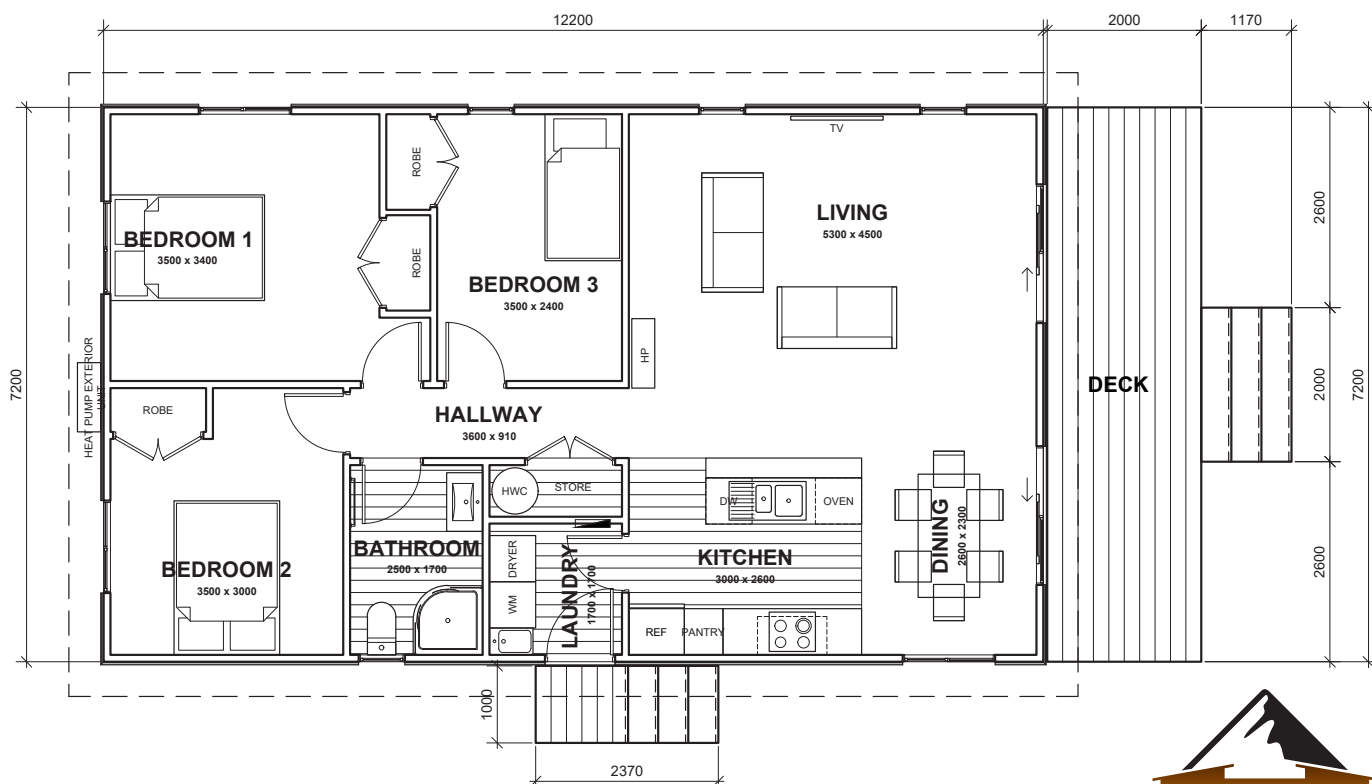
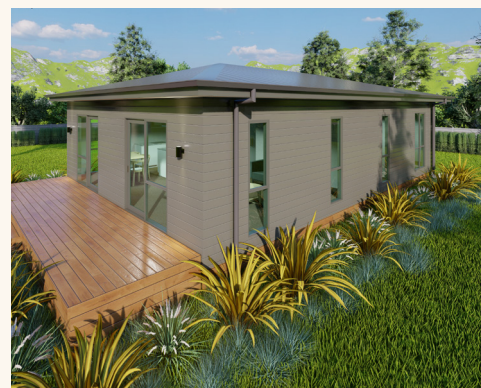




- ↕ 12.2m x 7.2m
- ⊞ Floor Area 88m<sup>2</sup>
- 🛏 3 Bedrooms
- 🚿 1 Bathroom
- 🚽 1 Toilet

## NEWTON

Practical, compact and affordable, this home features 2 double bedrooms and a single room/office. At 88m<sup>2</sup> it's ideal as a cost effective downsizing option or an affordable first home. Perfect for a growing family or a couple needing more space.



(Images are artist impressions only & the landscaping is not included. This plan is available as a mono, gable or hip roofline. We can add or remove wing walls & adjust the cladding to suit your style. Plans are subject to change.)



**SOUTH PEAK HOMES**  
from our place to your space