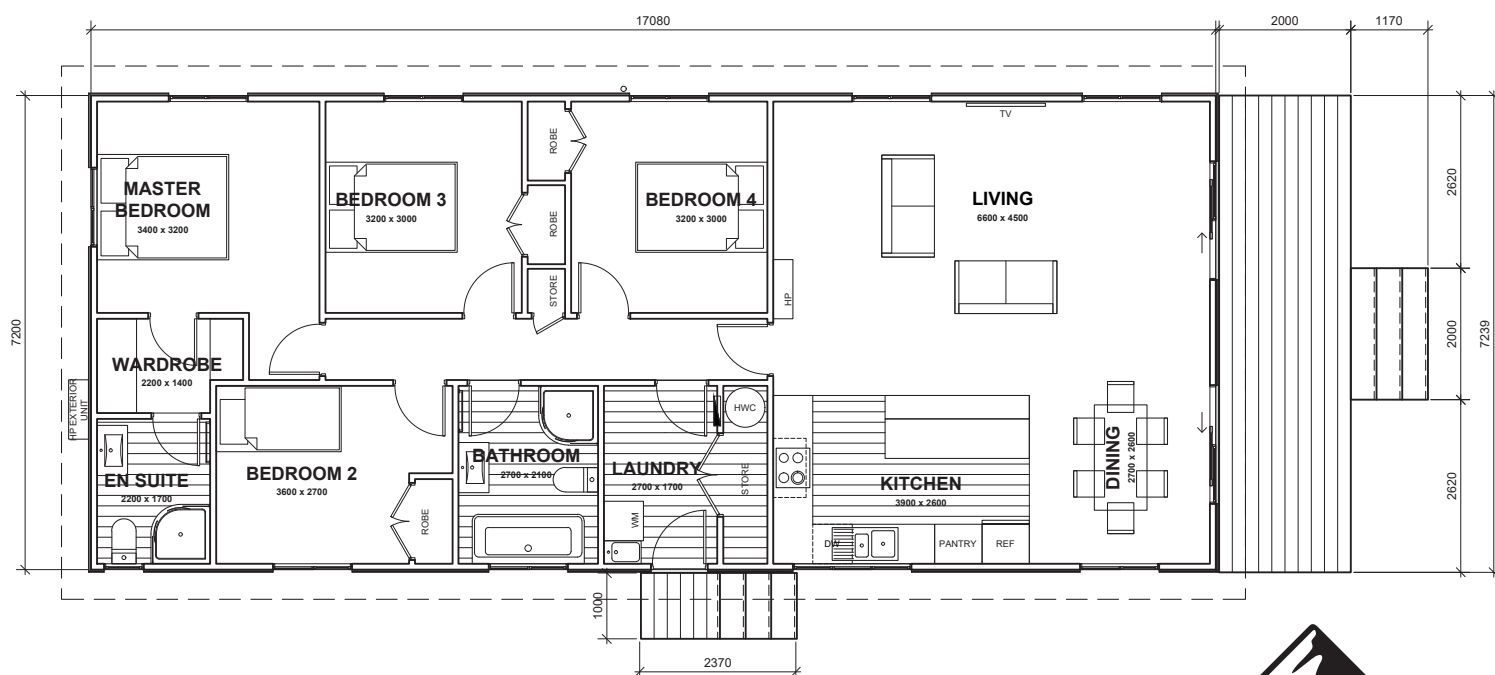




- ± 17.08m x 7.2m
- ⌘ Floor Area 123m<sup>2</sup>
- 🛏 4 Bedrooms
- 🚿 2 Bathrooms
- 🚽 2 Toilets

# SAXTON

If thoughtful design and affordability is what you need, then this family home is for you! The master bedroom features a walk through robe and private ensuite, while the main bathroom is conveniently located near the remaining bedrooms.



(Images are artist impressions only & the landscaping is not included. This plan is available as a mono, gable or hip roofline. We can add or remove wing walls & adjust the cladding to suit your style. Plans are subject to change.)



**SOUTH PEAK HOMES**  
from our place to your space