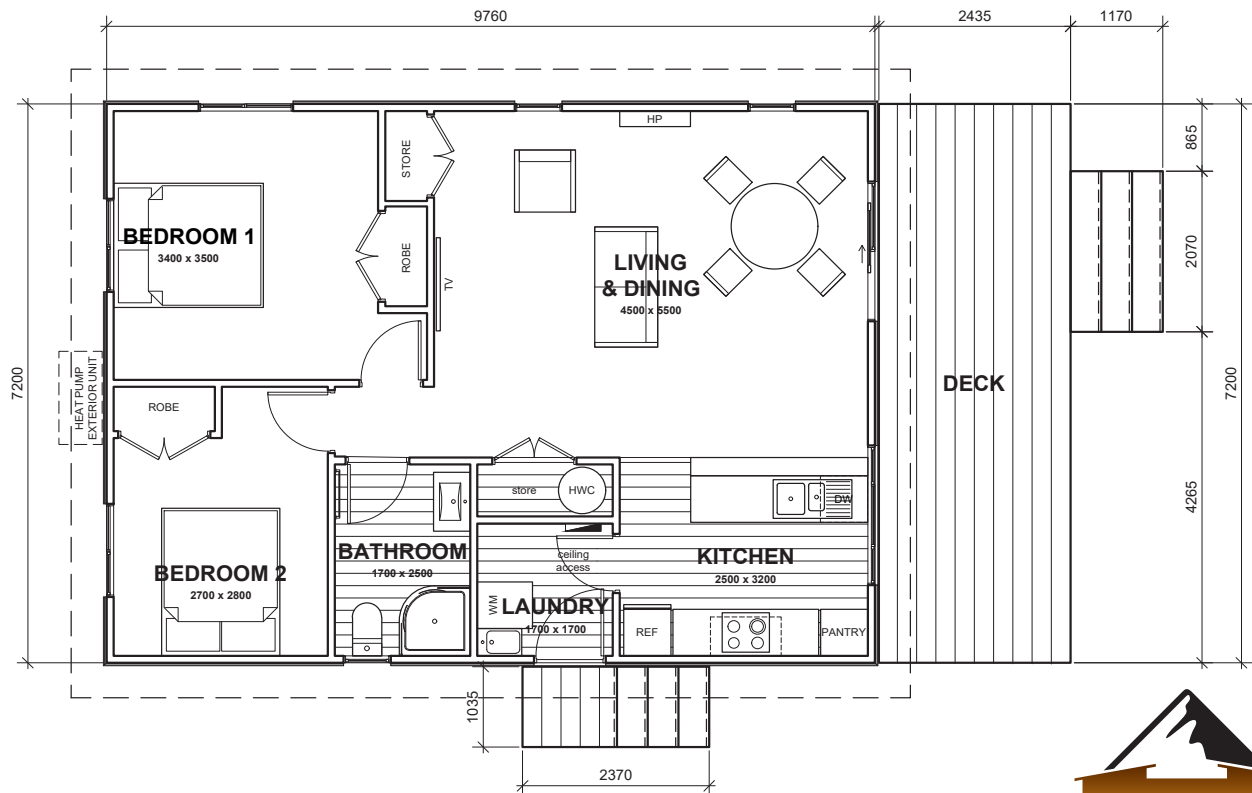




- ↕ 9.76m x 7.2m
- ⊠ Floor Area 70m<sup>2</sup>
- 🛏 2 Bedrooms
- 🚿 1 Bathroom
- 🚽 1 Toilet

# SEFTON

When space is at a premium this compact and affordable home gives you all the comforts you need. It's a perfect choice for a small section, a first home, downsizing, a second dwelling on an existing property or to have the grandparents close by.



**SOUTH PEAK HOMES**  
from our place to your space

(Images are artist impressions only & the landscaping is not included. This plan is available as a mono, gable or hip roofline. We can add or remove wing walls & adjust the cladding to suit your style. Plans are subject to change.)