




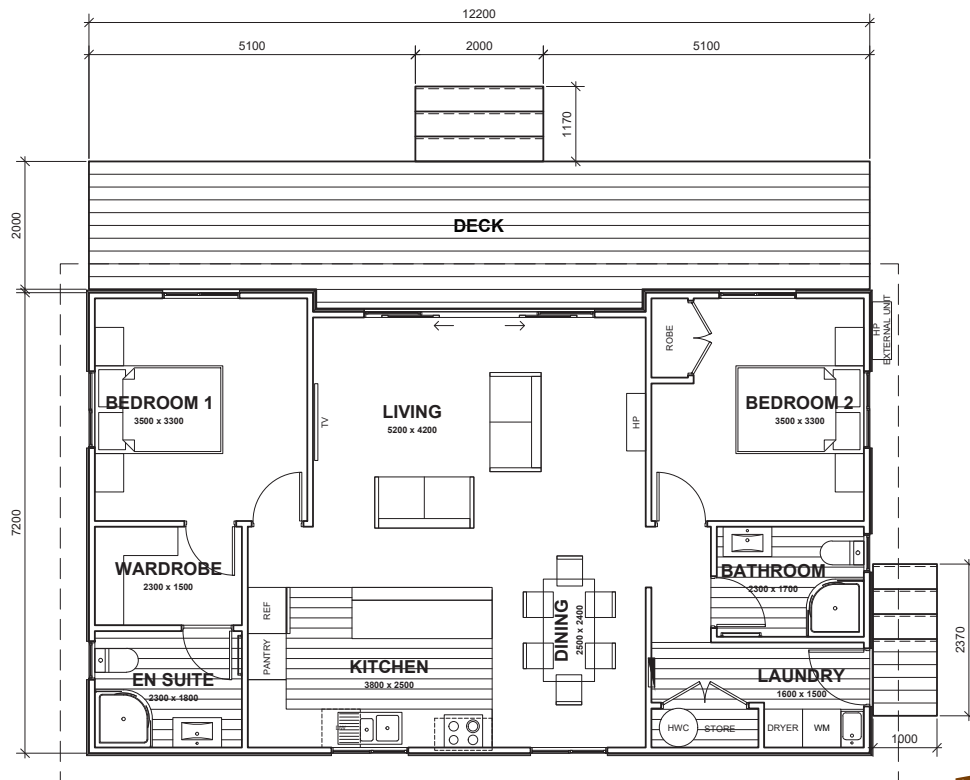




-  12.2m x 7.2m
-  Floor Area 86m<sup>2</sup>
-  2 Bedrooms
-  2 Bathrooms
-  2 Toilets

# TRIVERS

A modern 2 bedroom home with great architectural style. This design has two large bedrooms, walk-in robe, ensuite and open plan living. A great choice for a bach by the sea, guest accommodation in town or if you're wanting to downsize with plenty of room.



(Images are artist impressions only & the landscaping is not included. This plan is available as a mono, gable or hip roofline. We can add or remove wing walls & adjust the cladding to suit your style. Plans are subject to change.)



**SOUTH PEAK HOMES**  
from our place to your space