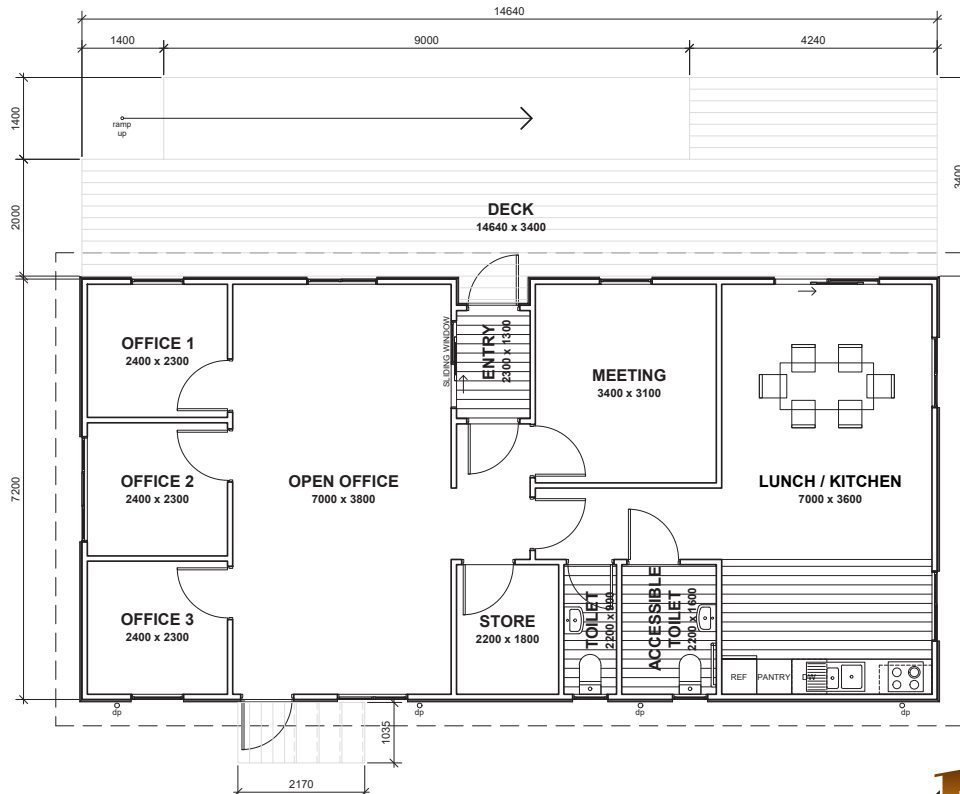




VICTOR.14

- ↕ 14.64m x 7.2m
- ⊠ Floor Area 106m²
- 🪑 3 Offices
- 🚻 2 Toilets

The Victor office block series is a modern, practical and economical option, designed to maximize usability and create a dynamic working environment. They feature 3 dedicated office spaces, an open office area, meeting room, store/ server room, ACC toilet, and a lunchroom.



SOUTH PEAK HOMES
from our place to your space

(Images are artist impressions only & the landscaping is not included. This plan is available as a mono, gable or hip roofline. We can add or remove wing walls & adjust the cladding to suit your style. Plans are subject to change.)