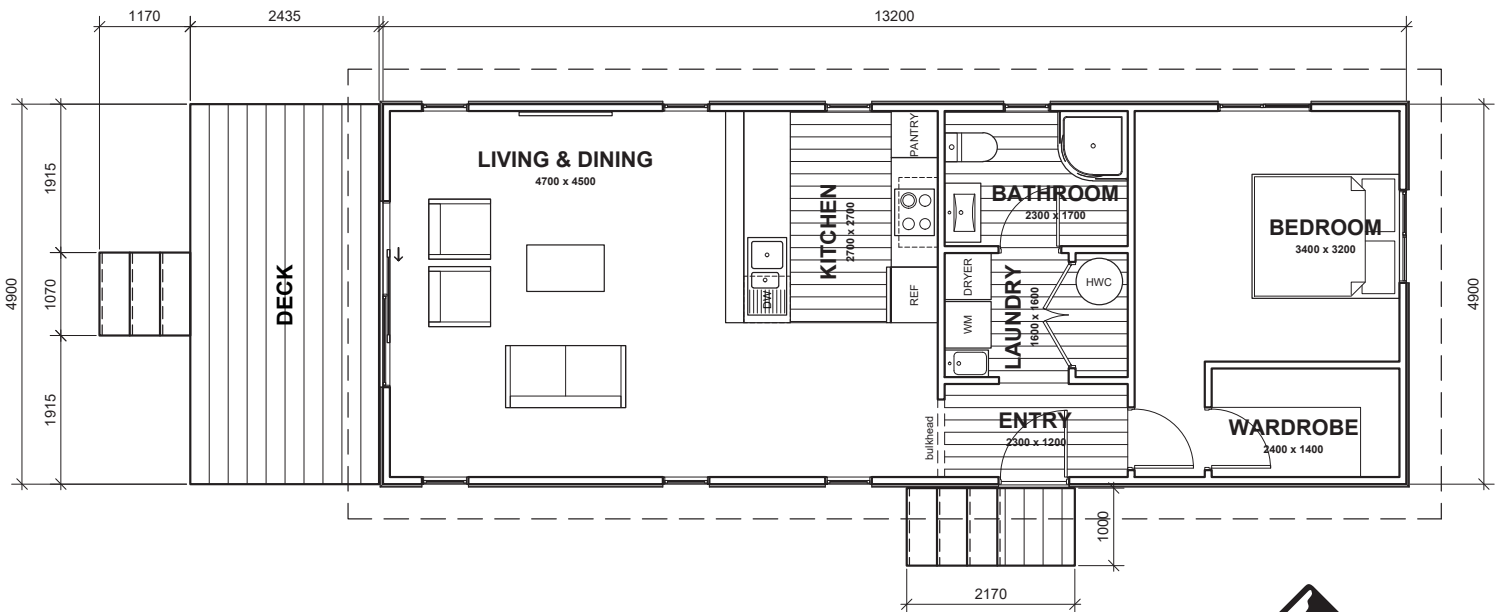




- ↕ 13.2m x 4.9m
- ⊠ Floor Area 65m²
- 🛏 1 Bedroom
- 🚿 1 Bathroom
- 🚽 1 Toilet

KENDALL

This stunning small home is designed to suit the narrowest of sections and is available in a mono, gable or hip roofline. It's a great option for a bach by the sea, airbnb rental investment, a town house or granny flat in an urban area.



SOUTH PEAK HOMES
from our place to your space

(Images are artist impressions only & the landscaping is not included. This plan is available as a mono, gable or hip roofline. We can add or remove wing walls & adjust the cladding to suit your style. Plans are subject to change.)