



SOUTH PEAK HOMES

from our place to your space

2023 CATALOGUE

Edition 5

OFF-SITE MANUFACTURED HOMES DELIVERED TO YOU

From our place to your space

© 2023 South Peak Homes

All rights reserved. No part of this publication may be copied or reproduced in any form, either in whole or in part, without the written permission of the publisher. While every effort has been made to ensure the accuracy of the information in this publication, the publisher assumes no responsibility for errors or omissions or for any consequences or reliance on this publication. Images and photographs in this book may include accessories, brands, names, furnishings, finishes and features not included in your building contract with South Peak Homes. Your New Home Consultant will provide full details of what is and isn't included in your home.



OFF-SITE MANUFACTURED HOMES & BUILDINGS

We specialize in constructing & delivering a range of residential homes, commercial office blocks and multi-unit accommodation buildings to suit your needs. Our homes & buildings are manufactured in our 2000sqm factory, fully finished inside & out, delivered to your site where they are placed on piles and connected to services.

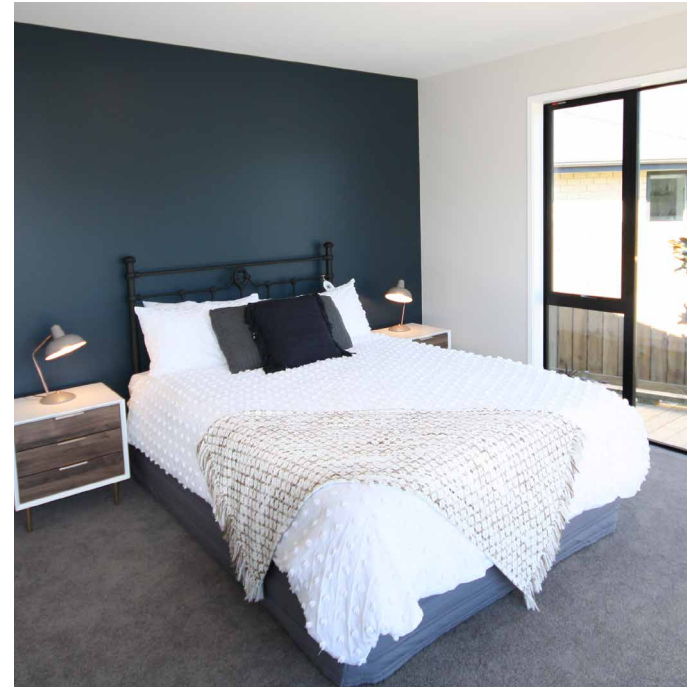
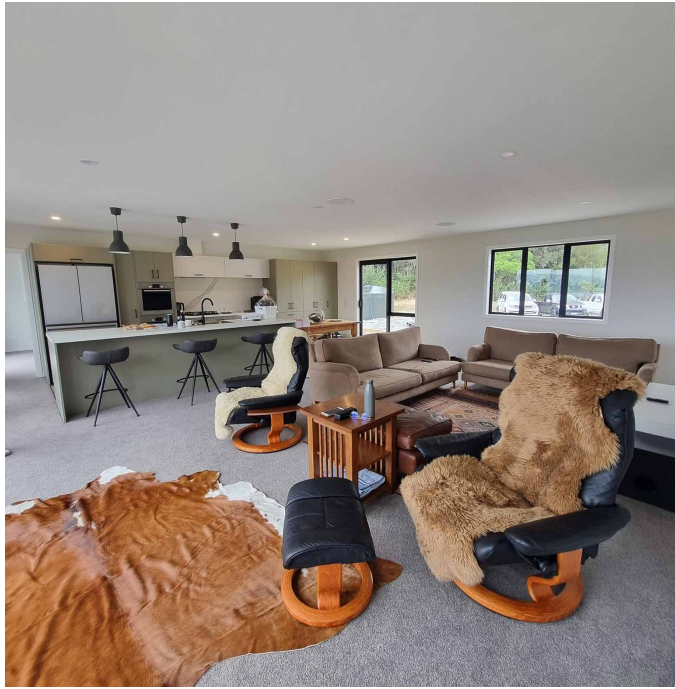
We believe off-site manufacturing is the way of the future, with many benefits of building in a safer, smarter, more sustainable way and in a controlled factory environment which ensures a high quality product & speed of delivery. Based in Westport, we deliver strong, warm, healthy homes to West Coast, Nelson, Tasman, Canterbury & Marlborough.



HOMES TO SUIT ALL BUDGETS & LIFESTYLES

Are you looking for your first home, need more space for your growing family or want a bach by the sea? Maybe you're ready to retire to that dream section, planning to increase your rental portfolio or need staff accommodation? If you're doing a subdivision and want to maximize your investment, we can provide a range of plans for house & land packages.

We have options to suit your needs with our architecturally inspired homes, available from 65-124sqm. You'll get great style, guaranteed quality & affordability. Our house plans are named after mountains from around the South Island, representing our peak performance as a new home provider. Get in touch to discuss your new house needs.



CONTENTS

House Plans	5
Commercial Plans	31
About Us	51
Your Benefits	55
Our Process	59
Show Home	67



SOUTH PEAK HOMES

from our place to your space





HOUSE PLANS

CHOOSE YOUR HOME FROM OUR RANGE OF PLANS

KENDALL | Page 7



- Floor Area 65m²
- 1 Bedroom
- 1 Bathroom
- 1 Toilet

SEFTON | Page 9



- Floor Area 70m²
- 2 Bedrooms
- 1 Bathroom
- 1 Toilet

GLASGOW | Page 11



- Floor Area 80m²
- 2 Bedrooms
- 1 Bathroom
- 1 Toilets

TRAVERS | Page 13



- Floor Area 86m²
- 2 Bedrooms
- 2 Bathrooms
- 2 Toilets

BEALEY | Page 15



- Floor Area 88m²
- 2 Bedrooms
- 2 Bathrooms
- 3 Toilets

NEWTON | Page 17



- Floor Area 88m²
- 3 Bedrooms
- 1 Bathroom
- 1 Toilet

CORONET | Page 19



- Floor Area 106m²
- 3 Bedrooms
- 1 Bathroom
- 2 Toilets

HAAST | Page 21



- Floor Area 106m²
- 3 Bedrooms
- 1 Bathroom
- 2 Toilets

BUCKLAND | Page 23



- Floor Area 106m²
- 3 Bedrooms
- 2 Bathrooms
- 2 Toilets

OAKDEN | Page 25



- Floor Area 118m²
- 3 Bedrooms
- 1 Bathroom
- 2 Toilets

TURNBULL | Page 27



- Floor Area 123m²
- 3 Bedrooms
- 2 Bathrooms
- 2 Toilets

SAXTON | Page 29



- Floor Area 123m²
- 4 Bedrooms
- 2 Bathrooms
- 2 Toilets

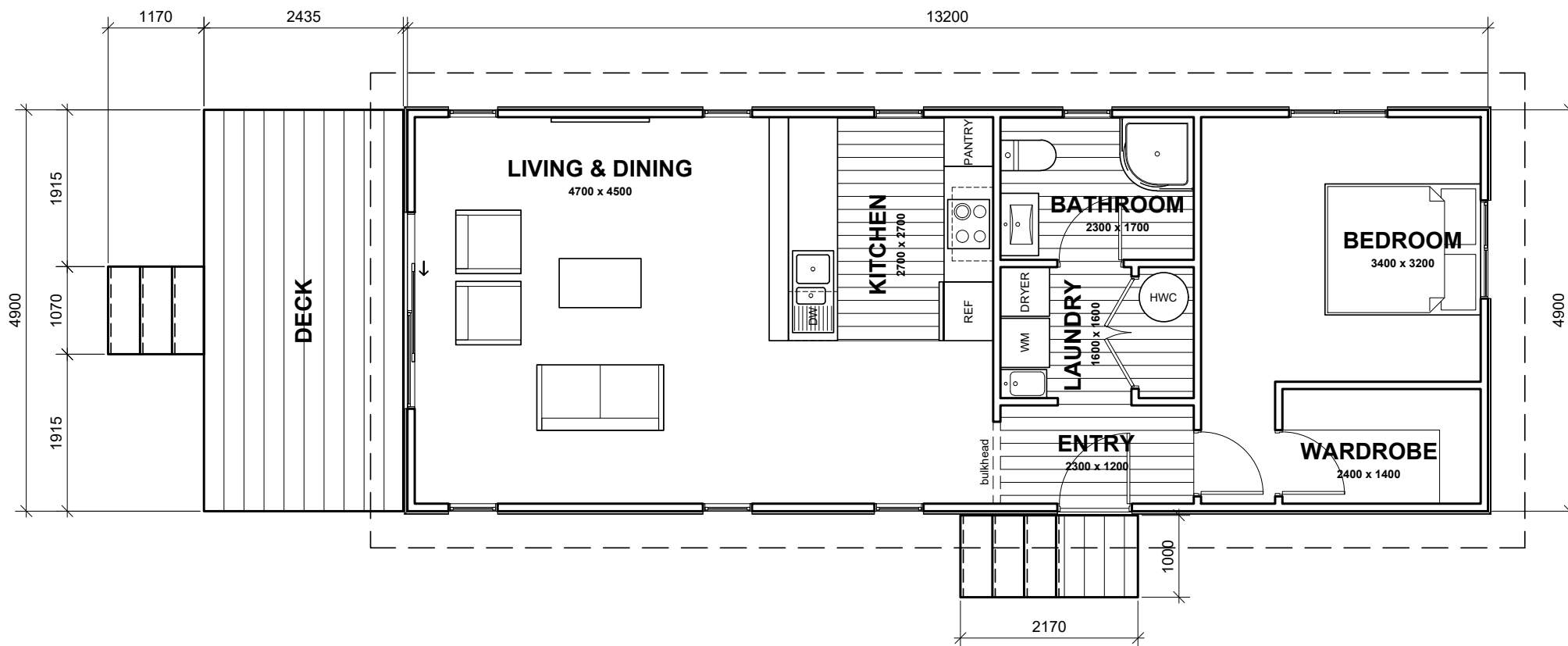


± 13.2m x 4.9m
⌘ Floor Area 65m²
🛏 1 Bedroom
🚿 1 Bathroom
🚽 1 Toilet

KENDALL

This stunning small home is designed to suit the narrowest of sections and is available in a mono, gable or hip roofline. It's a great option for a bach by the sea, airbnb rental investment, a town house or granny flat in an urban area.





(Images are artist impressions only. This plan is available as a mono, gable or hip rooflines.
We can add or remove wing walls & adjust the cladding to suit your style. Plans are subject to change)



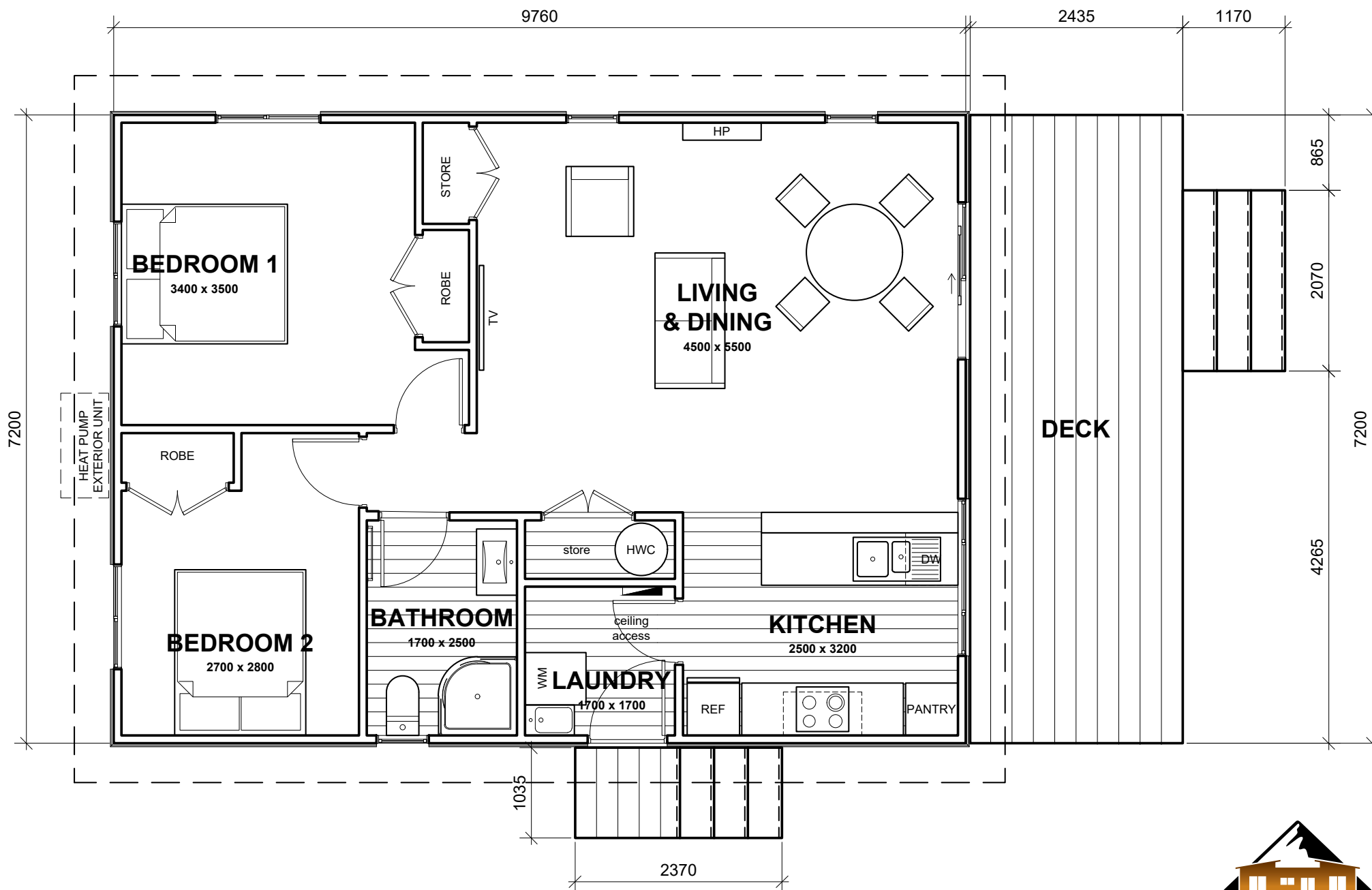


- ↕ 9.76m x 7.2m
- ⌘ Floor Area 70m²
- 🛏 2 Bedrooms
- 🚿 1 Bathroom
- 🚽 1 Toilet

SEFTON

When space is at a premium this compact and affordable home gives you all the comforts you need. It's a perfect choice for a small section, a first home, downsizing, a second dwelling on an existing property or to have the grandparents close by.





(Images are artist impressions only. This plan is available as a mono, gable or hip rooflines.
We can add or remove wing walls & adjust the cladding to suit your style. Plans are subject to change)



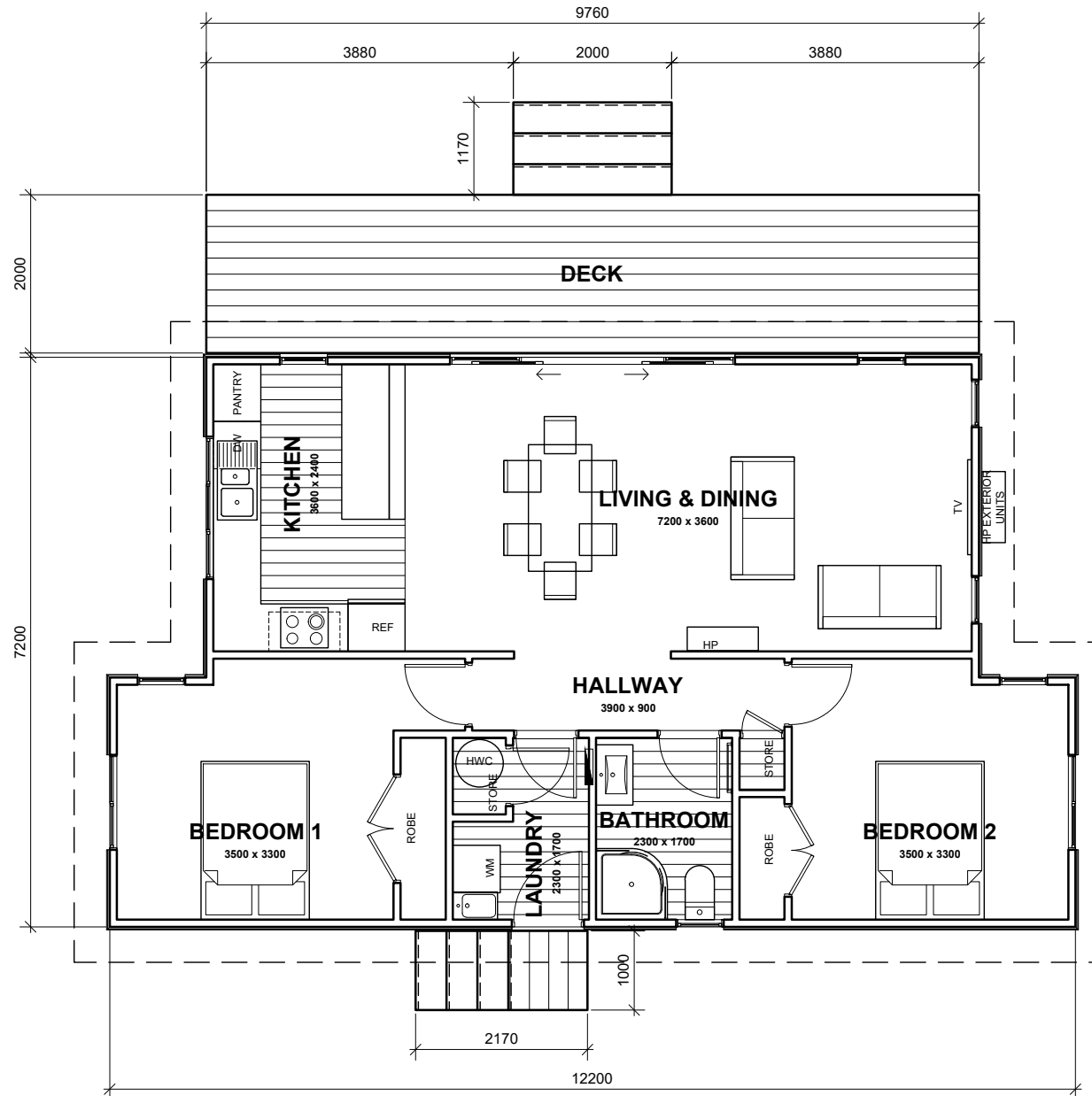


- 12.2m x 7.2m
- Floor Area 80m²
- 2 Bedrooms
- 1 Bathroom
- 1 Toilet

GLASGOW

This popular dwelling has everything you need in just 80m². With open plan living & dining there's no wasted space and these areas are sure to benefit from any view. A great choice for a first home, a bach, accommodation units or if you're scaling down your house size.





(Images are artist impressions only. This plan is available as a mono or gable rooflines.
We can add or remove wing walls & adjust the cladding to suit your style. Plans are subject to change)



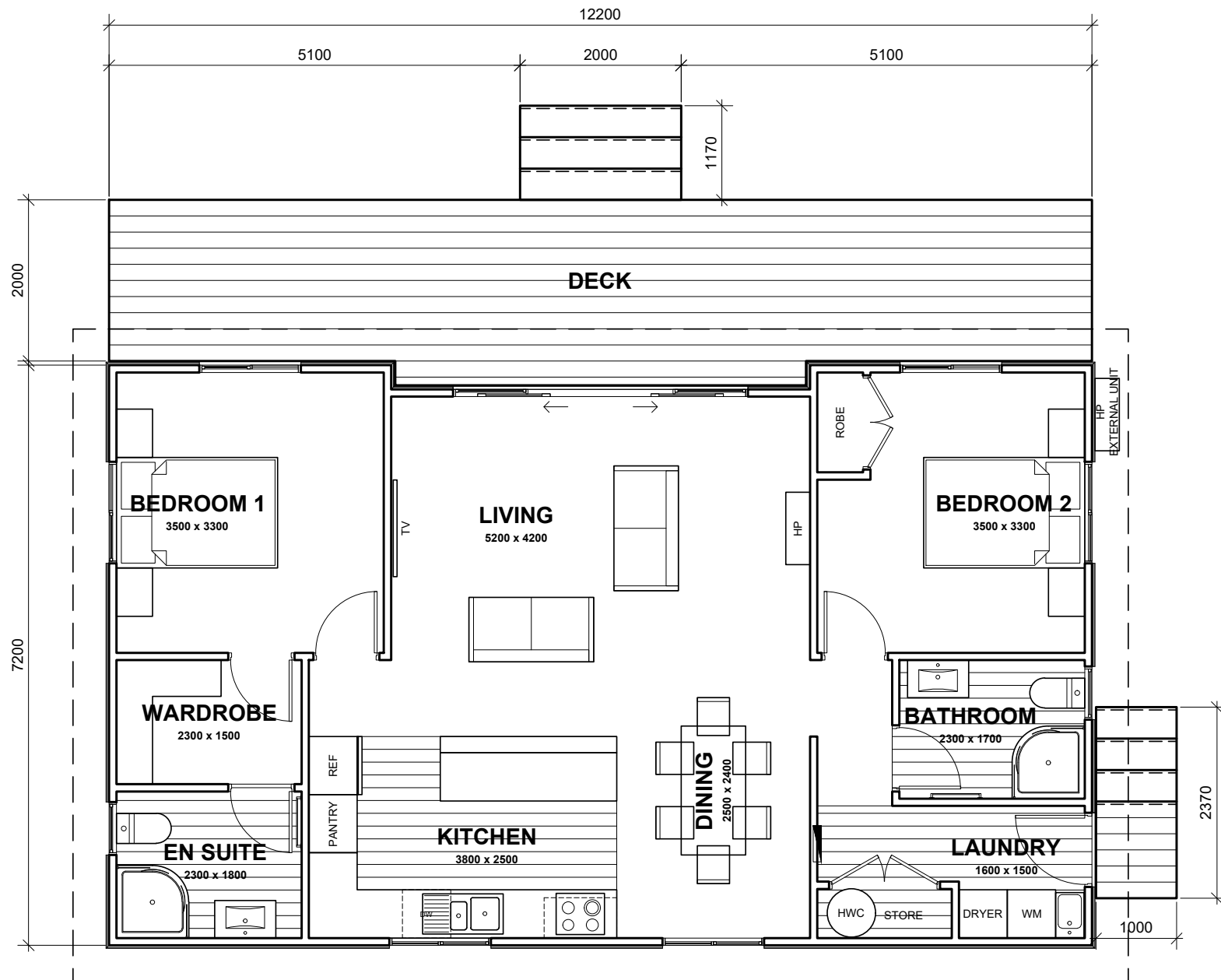


- 12.2m x 7.2m
- Floor Area 86m²
- 2 Bedrooms
- 2 Bathrooms
- 2 Toilets

TRIVERS

A modern 2 bedroom home with great architectural style. This design has two large bedrooms, walk-in robe, ensuite and open plan living. A great choice for a bach by the sea, guest accommodation in town or if you're wanting to downsize with plenty of room.





(Images are artist impressions only. This plan is available as a mono, gable or hip rooflines.
We can add or remove wing walls & adjust the cladding to suit your style. Plans are subject to change)



SOUTH PEAK HOMES
from our place to your space

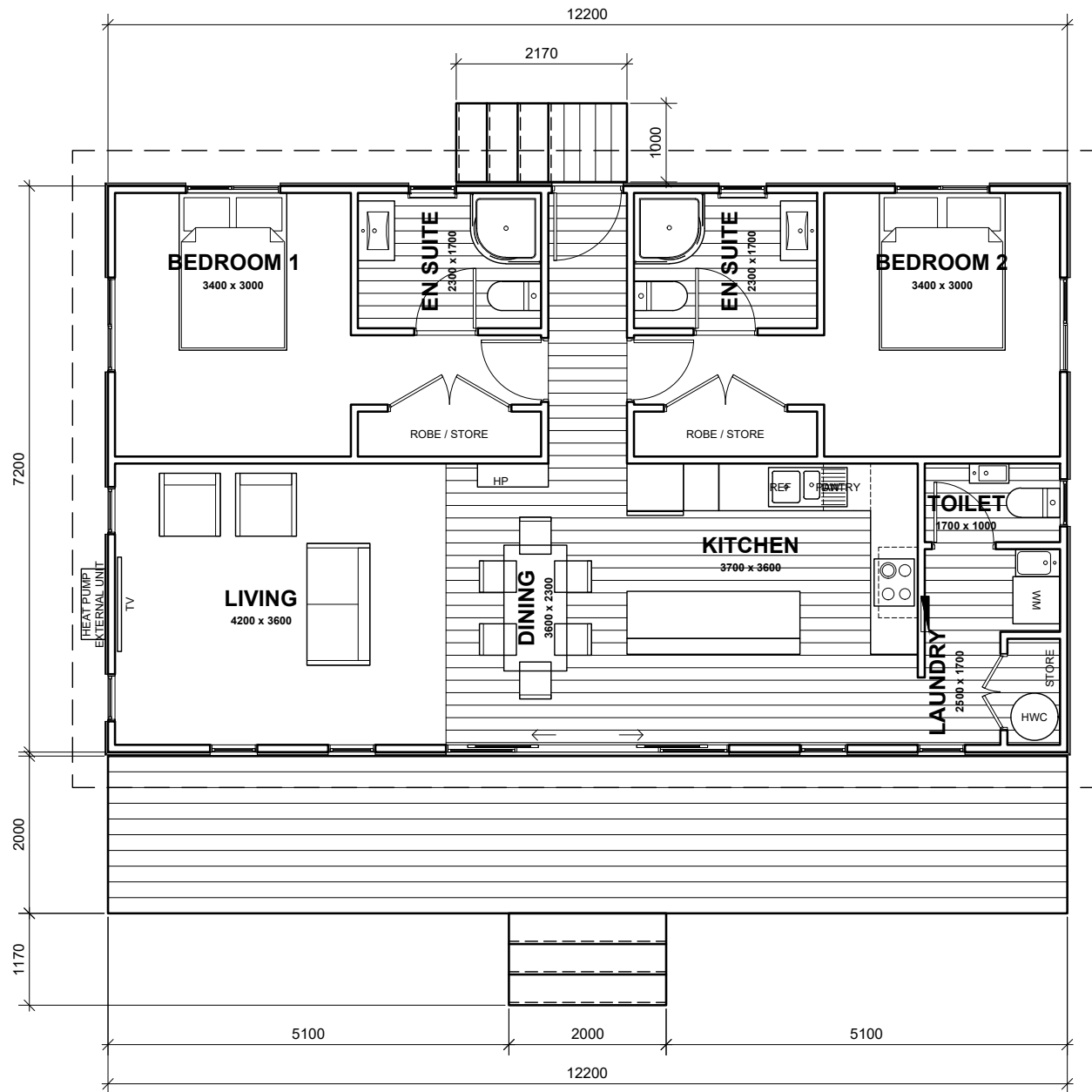


- 12.2m x 7.2m
- Floor Area 88m²
- 2 Bedrooms
- 2 Bathrooms
- 3 Toilets

BEALEY

If you're wanting a good rental investment with shared living facilities for accommodation purposes, then this is the plan for you. This home boasts two large bedrooms with ensuites, a laundry and large storage spaces.





(Images are artist impressions only. This plan is available as a mono, gable or hip rooflines.
We can add or remove wing walls & adjust the cladding to suit your style. Plans are subject to change)

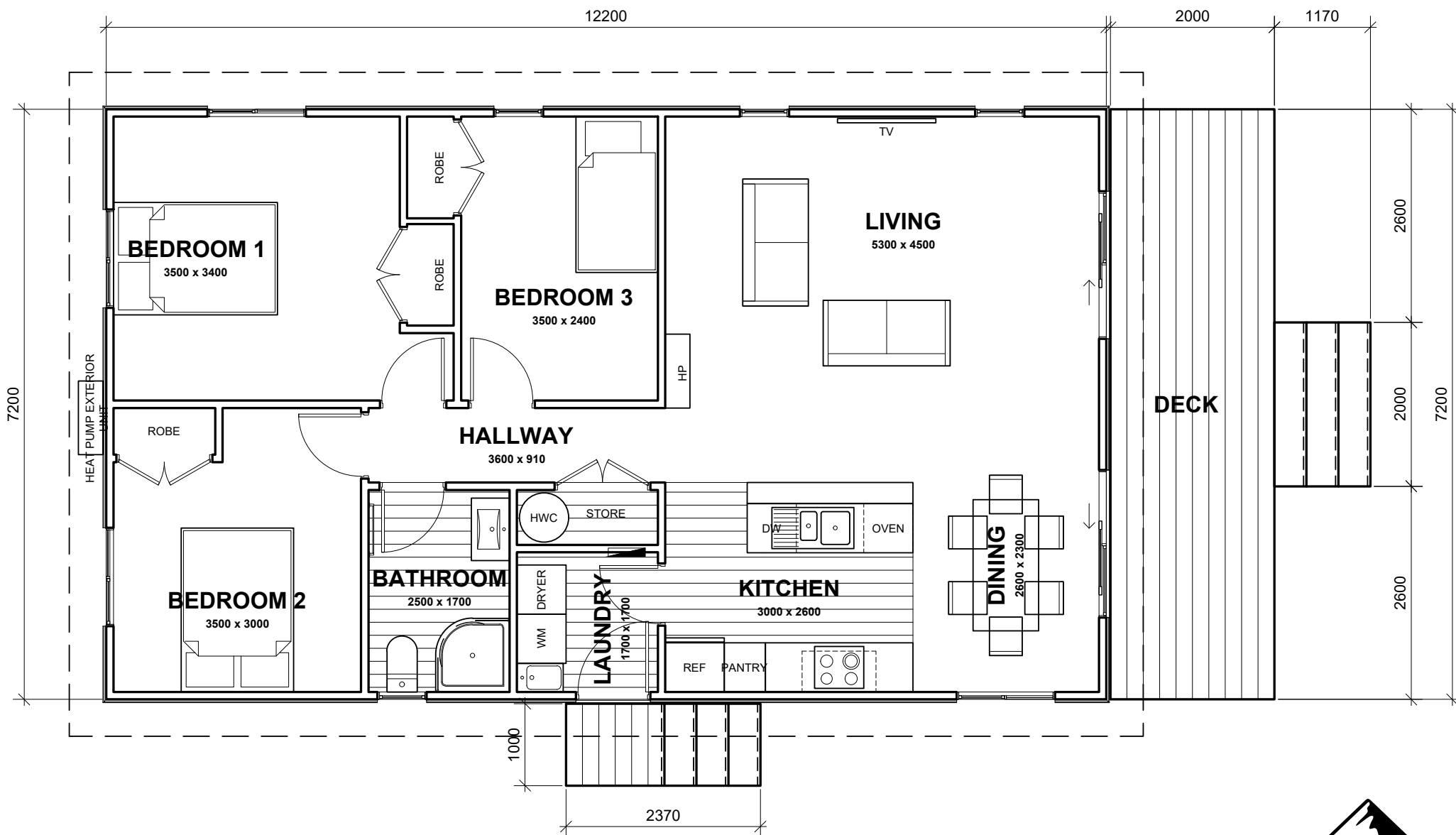




NEWTON

Practical, compact and affordable, this home features 2 double bedrooms and a single room/office. At 88m² it's ideal as a cost effective downsizing option or an affordable first home. Perfect for a growing family or a couple needing more space.





(Images are artist impressions only. This plan is available as a mono, gable or hip rooflines.
We can add or remove wing walls & adjust the cladding to suit your style. Plans are subject to change)



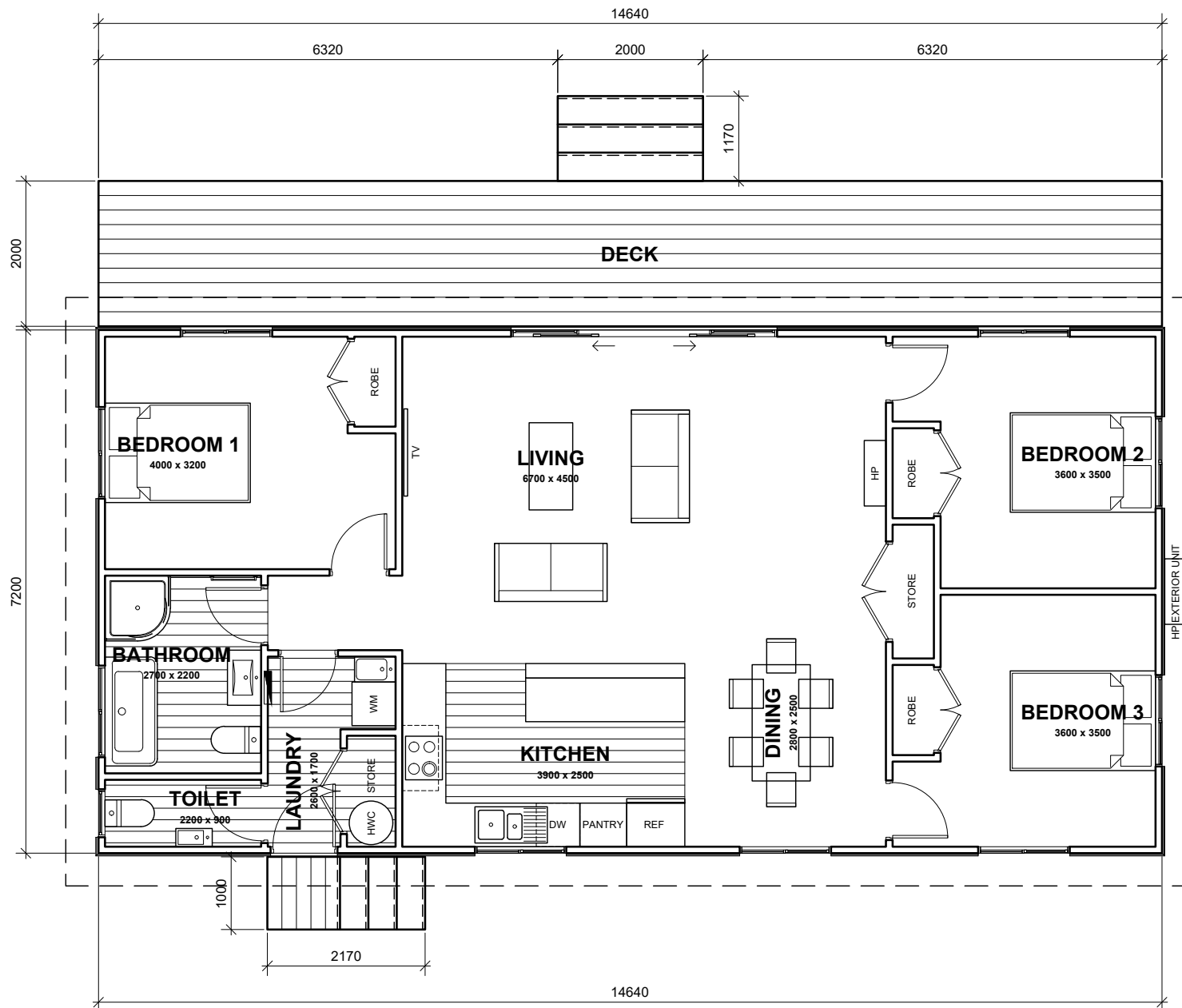


- ± 14.64m x 7.2m
- ⊠ Floor Area 106m²
- 🛏 3 Bedrooms
- 🚿 1 Bathroom
- 🚽 2 Toilets

CORONET

With a nice open plan layout and central living areas, this home is a modern spin on the great kiwi bach. The design allows for privacy to the master bedroom with easy access to the bathroom and kitchen. A large deck across the front gives extra room to enjoy the views.





(Images are artist impressions only. This plan is available as a mono, gable or hip rooflines.
We can add or remove wing walls & adjust the cladding to suit your style. Plans are subject to change)



SOUTH PEAK HOMES
from our place to your space

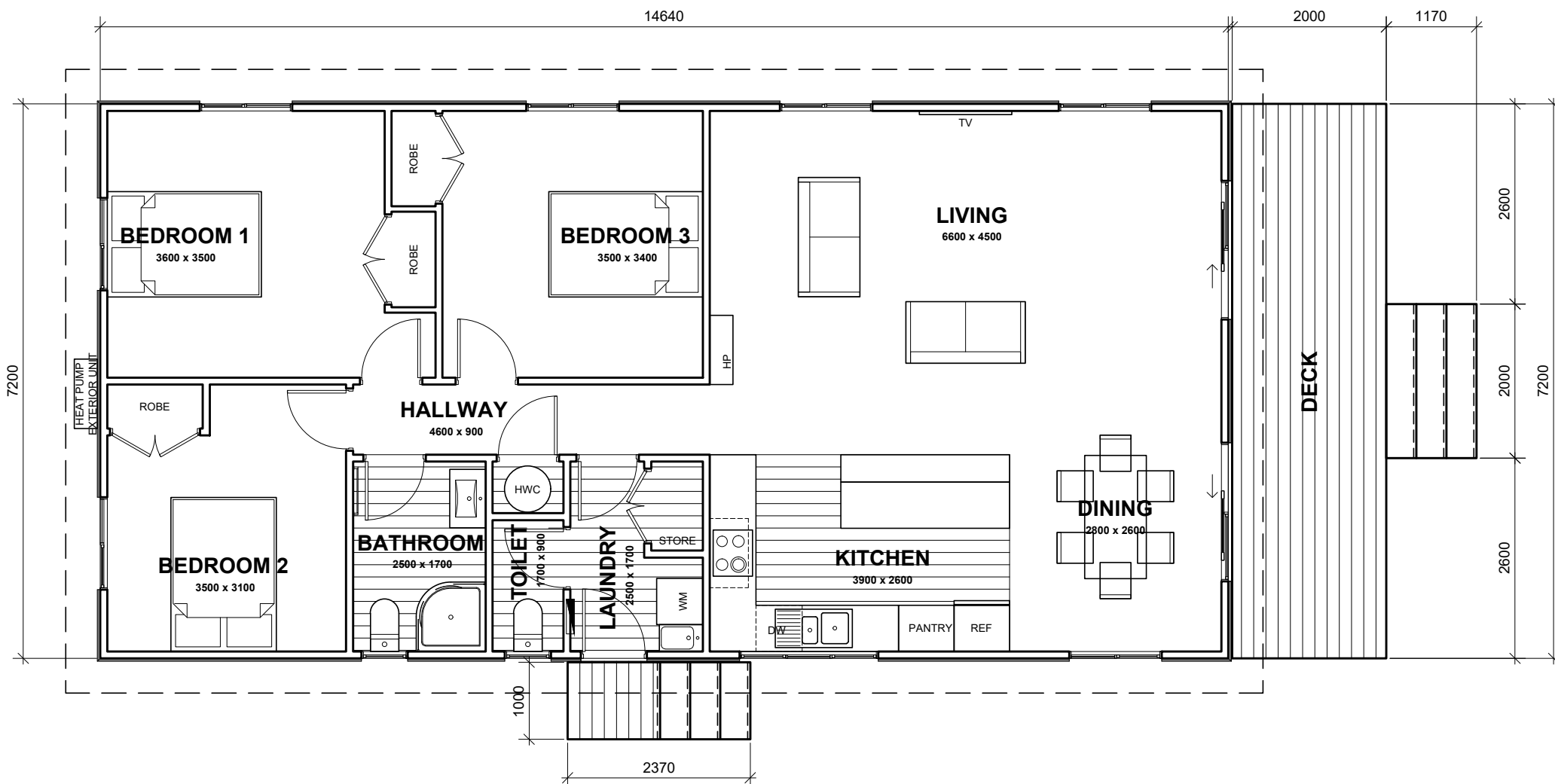


14.64m x 7.2m
 Floor Area 106m²
 3 Bedrooms
 1 Bathroom
 2 Toilets

HAAST

This easy living 3 bedroom home is one of our most popular designs and for a good reason! Featuring 2 toilets and spacious open plan living areas its a great option for a small family. You can see this home is designed with practical use in mind.





(Images are artist impressions only. This plan is available as a mono, gable or hip rooflines.
We can add or remove wing walls & adjust the cladding to suit your style. Plans are subject to change)



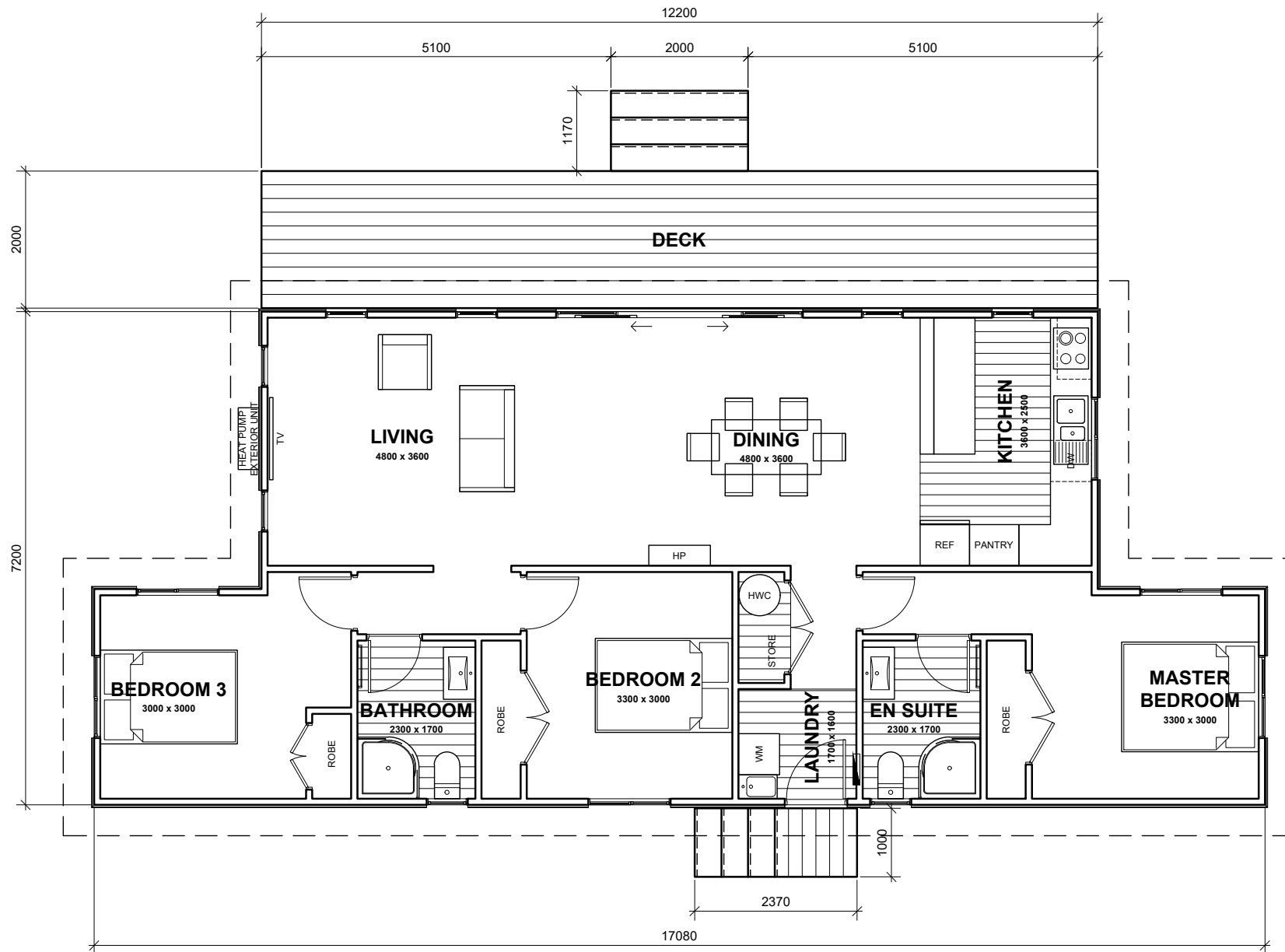


17.08m x 7.2m
 Floor Area 106m²
 3 Bedrooms
 2 Bathrooms
 2 Toilets

BUCKLAND

A great looking family home with the addition of an ensuite to give the grown-ups a little more of their own space. This design has nice open plan living and architectural lines that give it a modern contemporary feel.





(Images are artist impressions only. This plan is available as a mono or gable rooflines.
We can add or remove wing walls & adjust the cladding to suit your style. Plans are subject to change)



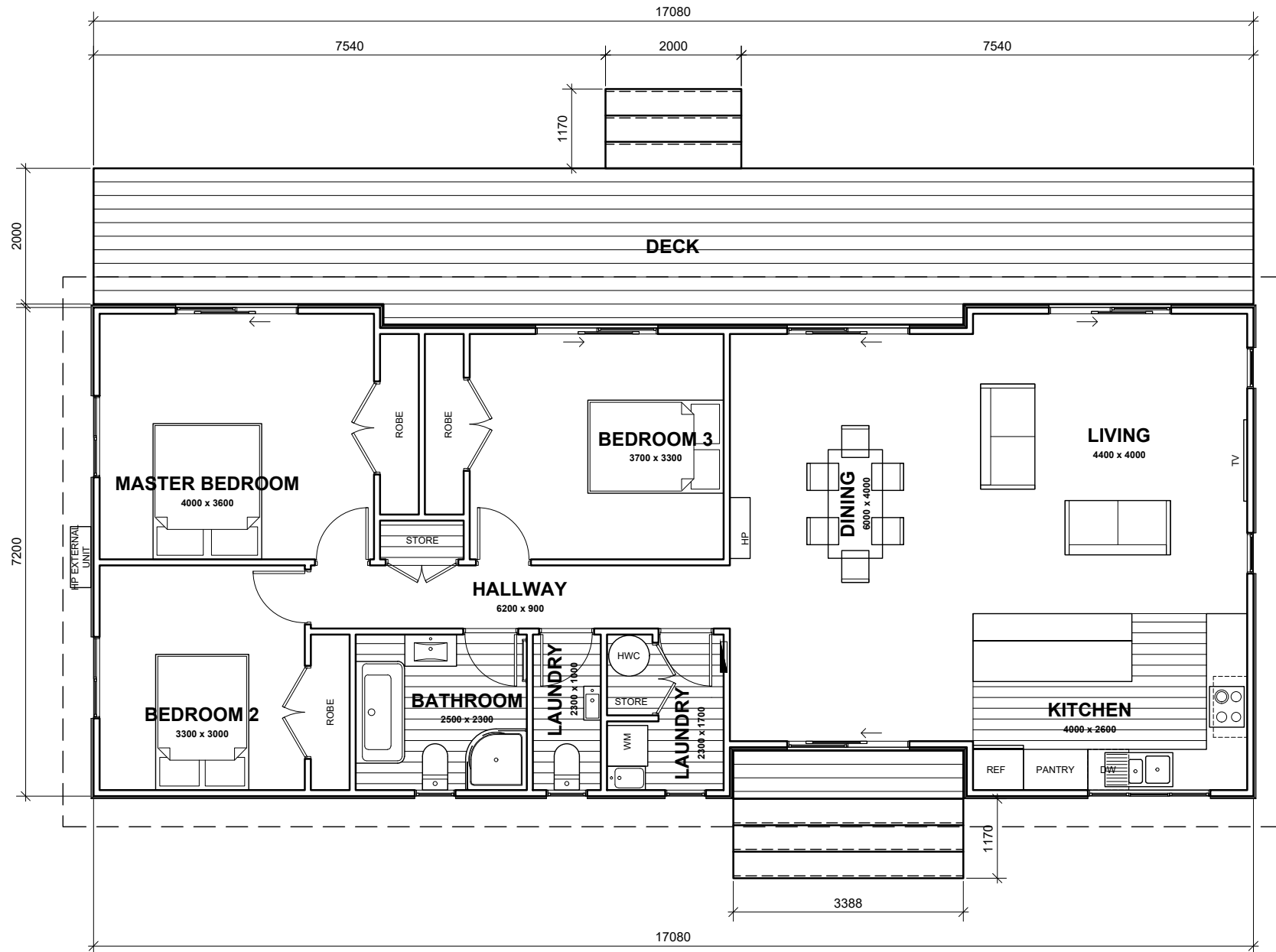
SOUTH PEAK HOMES
from our place to your space



OAKDEN

A modern looking home with open plan living and good inside outside flow. Big sliding doors make this perfect for entertaining on a large deck or lazing in the lounge and enjoying the view. With its large bedrooms and a big bathroom there's plenty of room for the family.





(Images are artist impressions only. This plan is available as a mono, gable or hip rooflines.
We can add or remove wing walls & adjust the cladding to suit your style. Plans are subject to change)



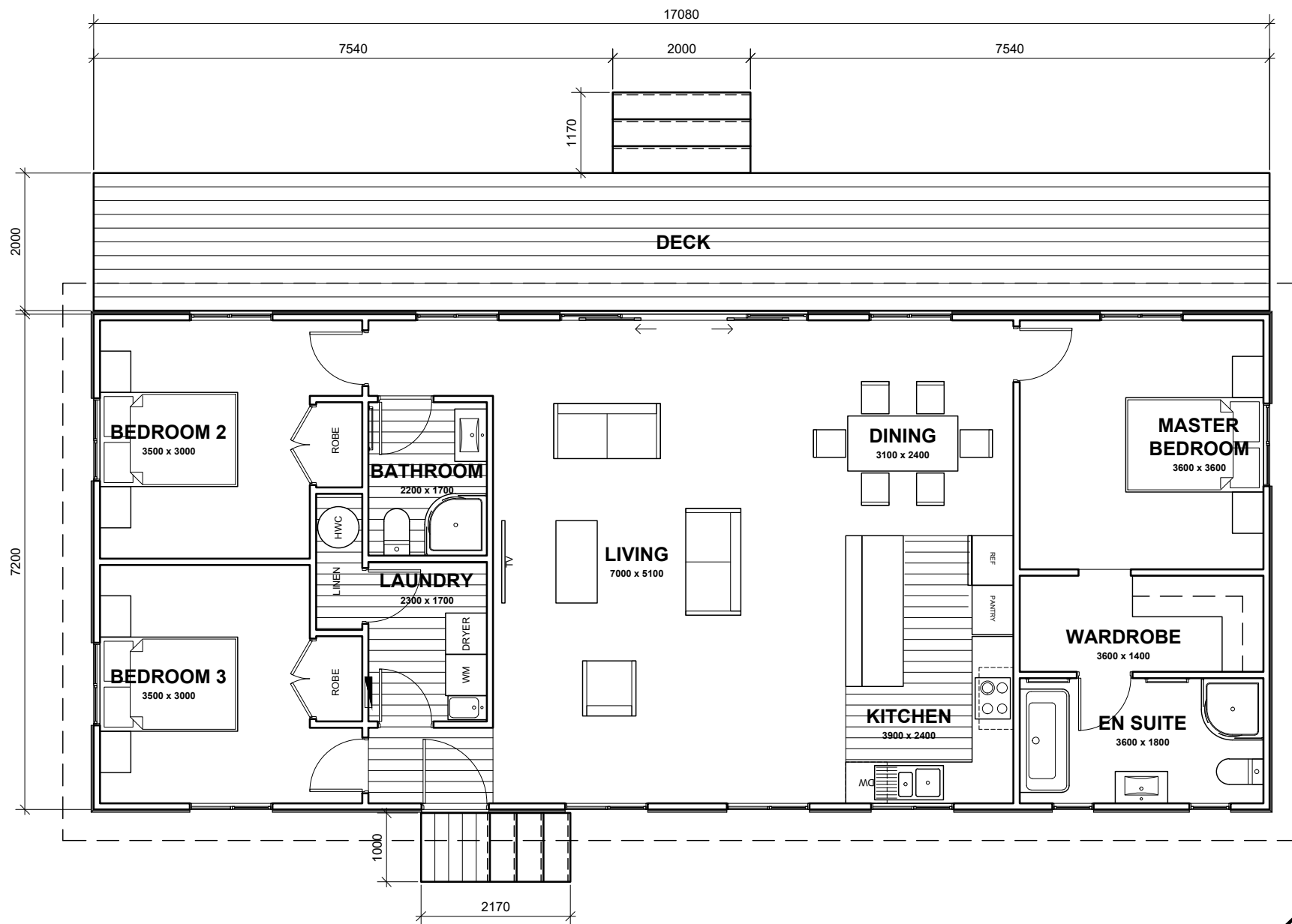


± 17.15m x 7.2m
Floor Area 123m²
3 Bedrooms
2 Bathrooms
2 Toilets

TURNBULL

This large 3 bedroom home boasts a big walk through robe, private ensuite, family sized laundry and a second bathroom. With centralized living it offers great views beyond from the front or back and has a large deck to share with friends and family.





(Images are artist impressions only. This plan is available as a mono, gable or hip rooflines.
We can add or remove wing walls & adjust the cladding to suit your style. Plans are subject to change)



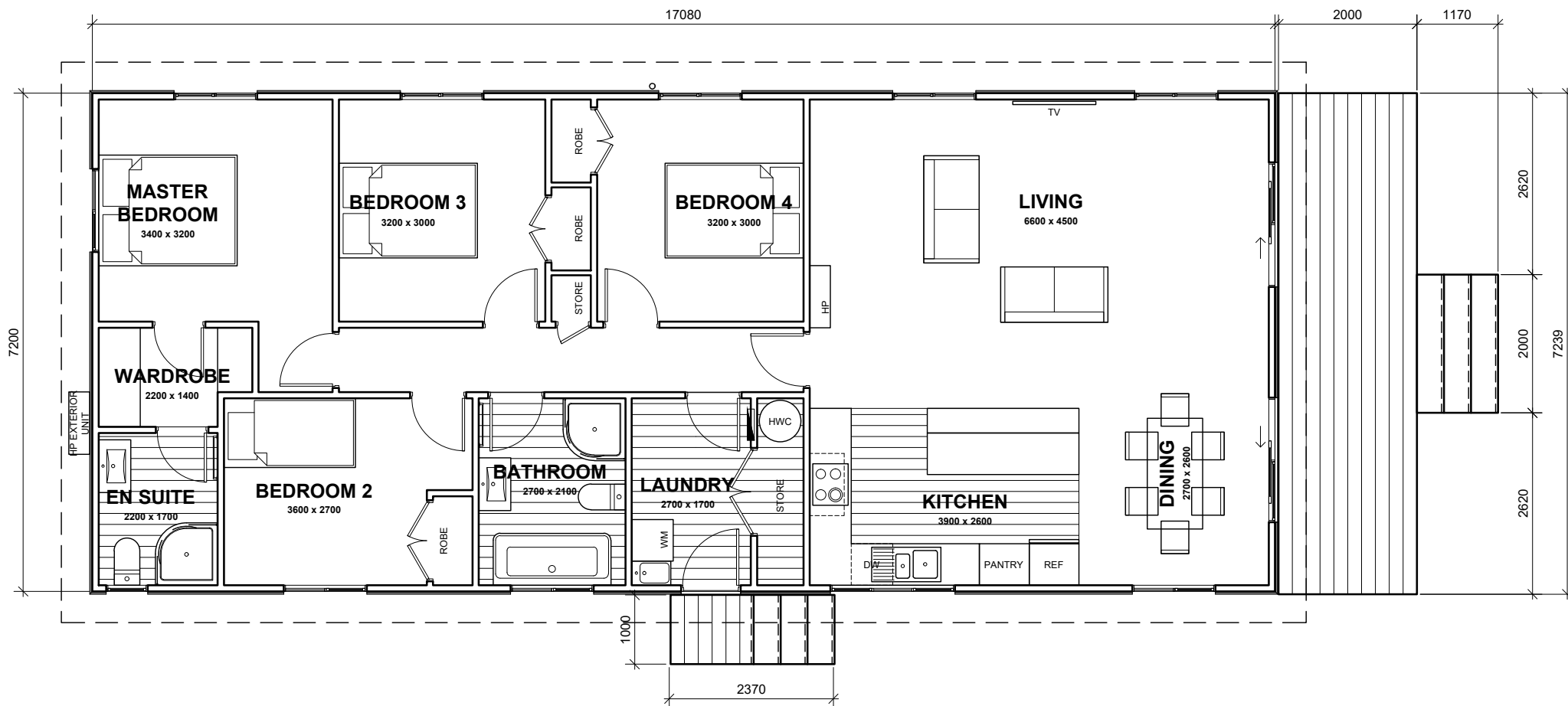


- ± 17.08m x 7.2m
- ⌘ Floor Area 123m²
- 🛏 4 Bedrooms
- 🚿 2 Bathrooms
- 🚽 2 Toilets

SAXTON

If thoughtful design and affordability is what you need, then this family home is for you! The master bedroom features a walk through robe and private ensuite, while the main bathroom is conveniently located near the remaining bedrooms.





(Images are artist impressions only. This plan is available as a mono, gable or hip rooflines.
We can add or remove wing walls & adjust the cladding to suit your style. Plans are subject to change)





COMMERCIAL PLANS

FIND YOUR NEW OFFICE & ACCOMMODATION UNITS HERE





OFFICE BLOCKS

The Victor office block series is a modern, practical, and economical option, designed to maximize usability and create a dynamic working environment for the commercial sector.

The Victor series includes 3 dedicated office spaces, an open plan office area, meeting room, store/server room, ACC toilet and lunchroom. There's plenty of room to cater for most daily routines and needs within a small to medium sized business. Verandahs, decking & siteworks can be arranged as required.

ACCOMMODATION UNITS

We offer a range of accommodation units for RSE seasonal workers, Airbnb rentals and visitor accommodation. These are designed as standalone shared facility units that can accommodate up to 11 people and multi-unit packages for accommodating up to 34 people or more. All units have bunk rooms, separate toilets, full bathrooms, a large open plan kitchen, lounge, dining area and laundry. Your guests will be very comfortable, resulting in a happy, healthy experience and maximizing your investment.

Our units are designed to meet WorkSafe legislation & horticultural NZ guidelines. They are available as fully furnished or unfurnished. Verandahs, decking and siteworks can be arranged as required.



VICTOR.12 | Page 35



- ✕ Floor Area 88m²
- 🖨 3 Offices
- 🚽 2 Toilets

VICTOR.14 | Page 37



- ✕ Floor Area 106m²
- 🖨 3 Offices
- 🚽 2 Toilets

VICTOR.17 | Page 39



- ✕ Floor Area 123m²
- 🖨 3 Offices
- 🚽 2 Toilets

WHITCOMBE.7 | Page 41



- ✕ Floor Area 88m²
- 🛏 7 Beds
- 🚿 1 Bathroom
- 🚽 2 Toilets

WHITCOME.9 | Page 43



- ✕ Floor Area 106m²
- 🛏 9 Beds
- 🚿 2 Bathrooms
- 🚽 2 Toilets

WHITCOMBE.11 | Page 45



- ✕ Floor Area 123m²
- 🛏 11 Beds
- 🚿 2 Bathrooms
- 🚽 3 Toilets

ARROWSMITH.21 | Page 47



- ✕ Floor Area 246m²
- 🛏 21 Beds
- 🚿 4 Bathrooms
- 🚽 4 Toilets

ARROWSMITH.34 | Page 49



- ✕ Floor Area 406m²
- 🛏 34 Beds
- 🚿 9 Bathrooms
- 🚽 9 Toilets

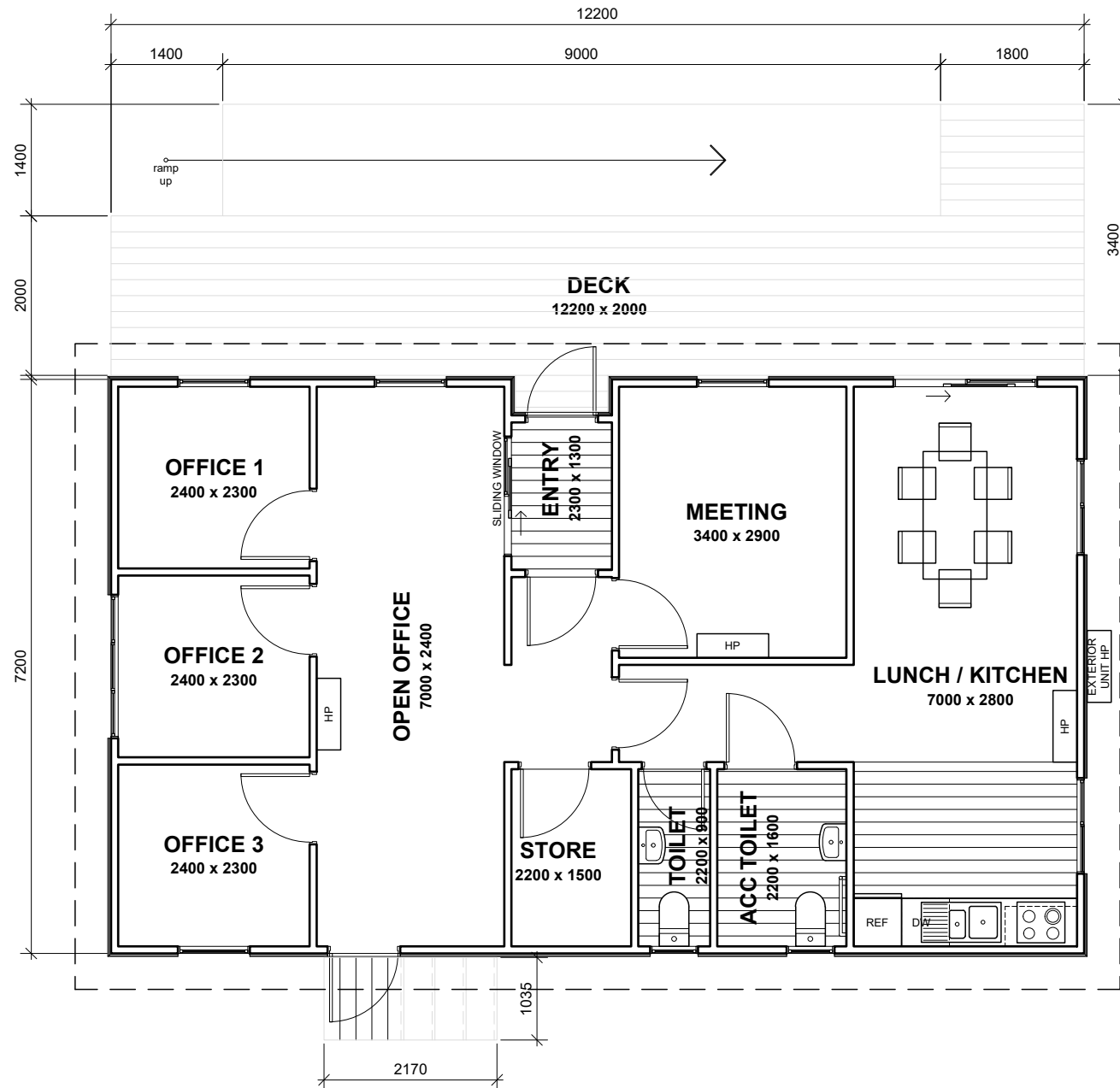


- 12.2m x 7.2m
- Floor Area 88m²
- 3 Offices
- 2 Toilets

VICTOR.12

The Victor office block series is a modern, practical and economical option, designed to maximize usability and create a dynamic working environment. They feature 3 dedicated office spaces, an open office area, meeting room, store/ server room, ACC toilet, and a lunchroom.





(Images are artist impressions only. This plan is available as a mono, gable or hip rooflines.
We can add or remove wing walls & adjust the cladding to suit your style. Plans are subject to change)



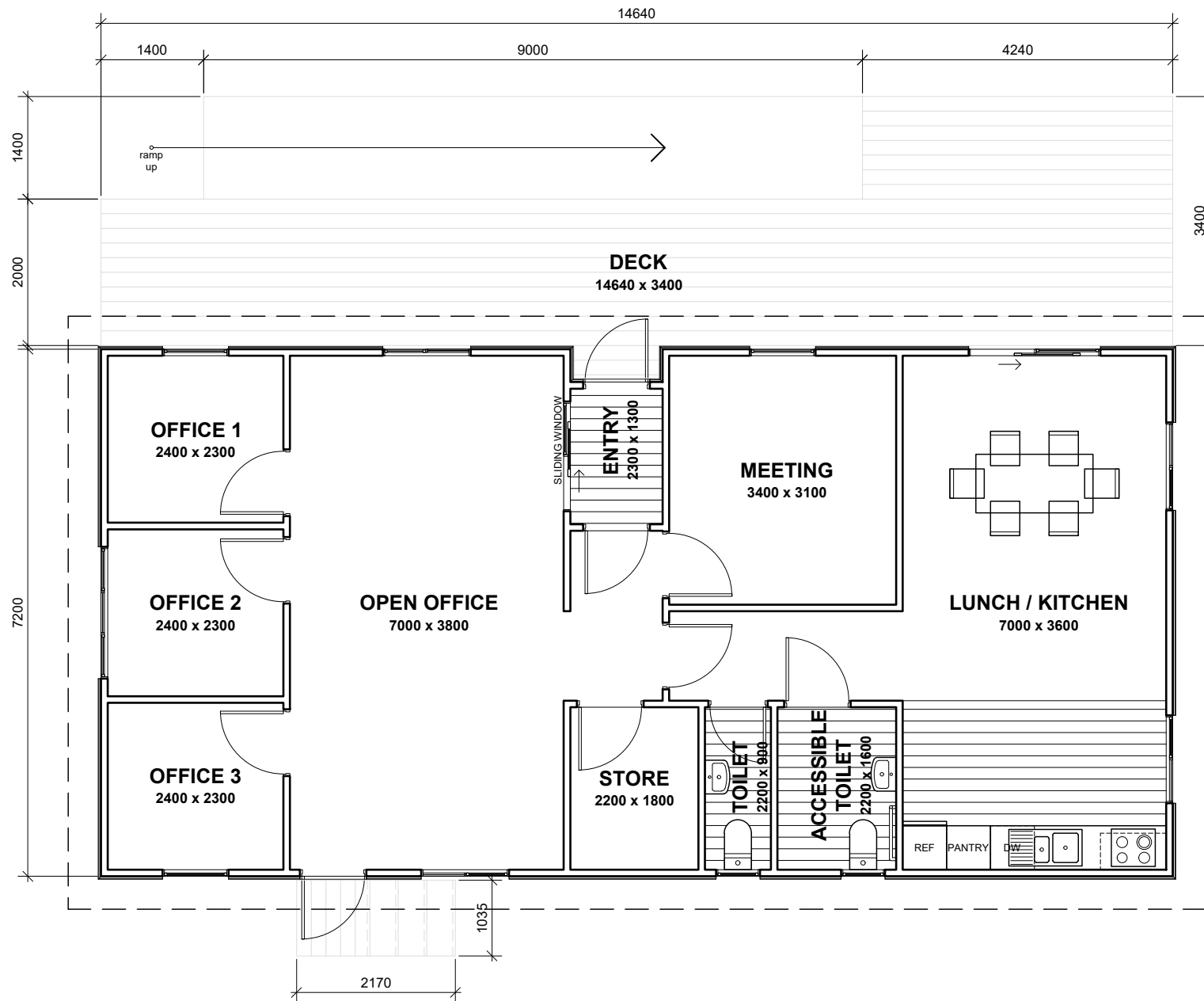


- 14.64m x 7.2m
- Floor Area 106m²
- 3 Offices
- 2 Toilets

VICTOR.14

The Victor office block series is a modern, practical and economical option, designed to maximize usability and create a dynamic working environment. They feature 3 dedicated office spaces, an open office area, meeting room, store/ server room, ACC toilet, and a lunchroom.





(Images are artist impressions only. This plan is available as a mono, gable or hip rooflines.
We can add or remove wing walls & adjust the cladding to suit your style. Plans are subject to change)





17.08m x 7.2m
Floor Area 123m²
3 Offices
2 Toilets

VICTOR.17

The Victor office block series is a modern, practical and economical option, designed to maximize usability and create a dynamic working environment. They feature 3 dedicated office spaces, an open office area, meeting room, store/ server room, ACC toilet, and a lunchroom.



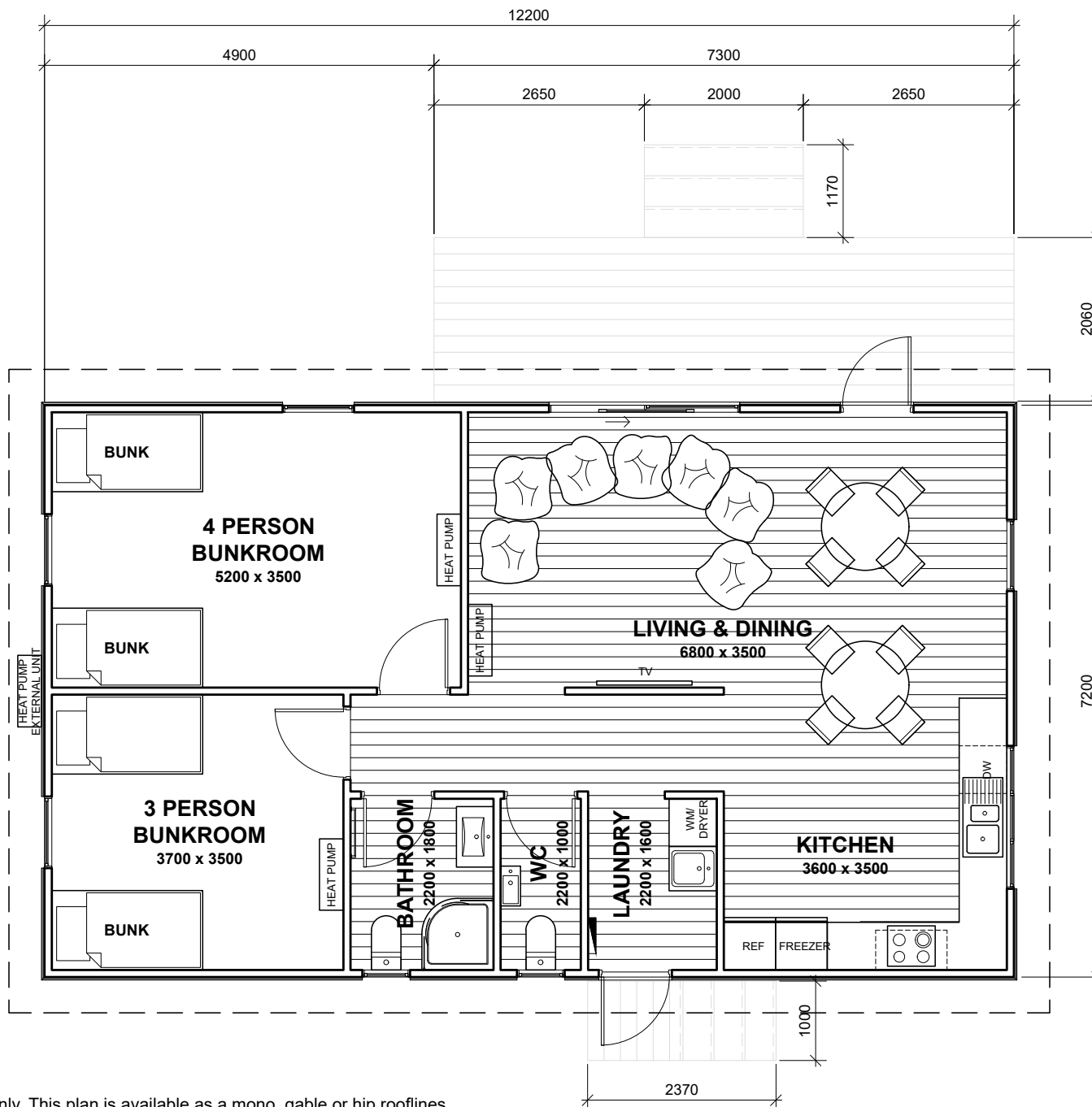


- ± 12.2m x 7.2m
- ⊠ Floor Area 88m²
- 🛏 7 Beds
- 🚿 1 Bathroom
- 🚽 2 Toilets

WHITCOME.7

This is a great option for a self contained, all in one accommodation unit for up to 7 people and features 2 bunk rooms, a full bathroom, a large open plan kitchen, lounge, dining area and a laundry. At 7.2m wide x 12.2m long this unit will accommodate a small number of staff members or guests very comfortably, with plenty of living and socializing space.





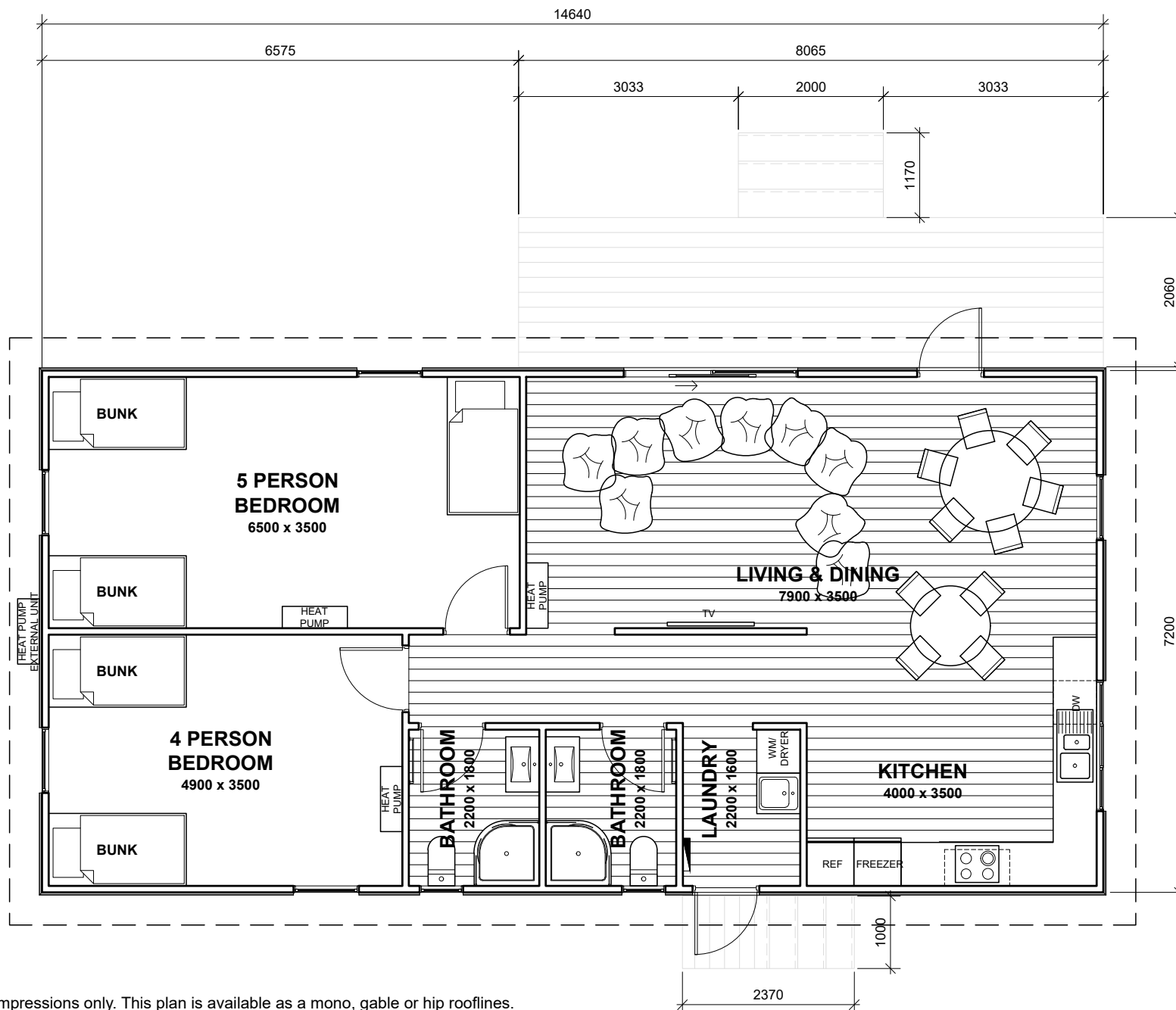
(Images are artist impressions only. This plan is available as a mono, gable or hip rooflines.
We can add or remove wing walls & adjust the cladding to suit your style. Plans are subject to change)



WHITCOMBE.9

This is a great option for a self contained, all in one accommodation unit for up to 9 people and features 2 bunk rooms, 2 full bathrooms, a large open plan kitchen, lounge, dining area and a laundry. At 7.2m wide x 14.64m long this unit will accommodate a medium number of staff members or guests very comfortably, with plenty of living and socializing space.





(Images are artist impressions only. This plan is available as a mono, gable or hip rooflines.
We can add or remove wing walls & adjust the cladding to suit your style. Plans are subject to change)



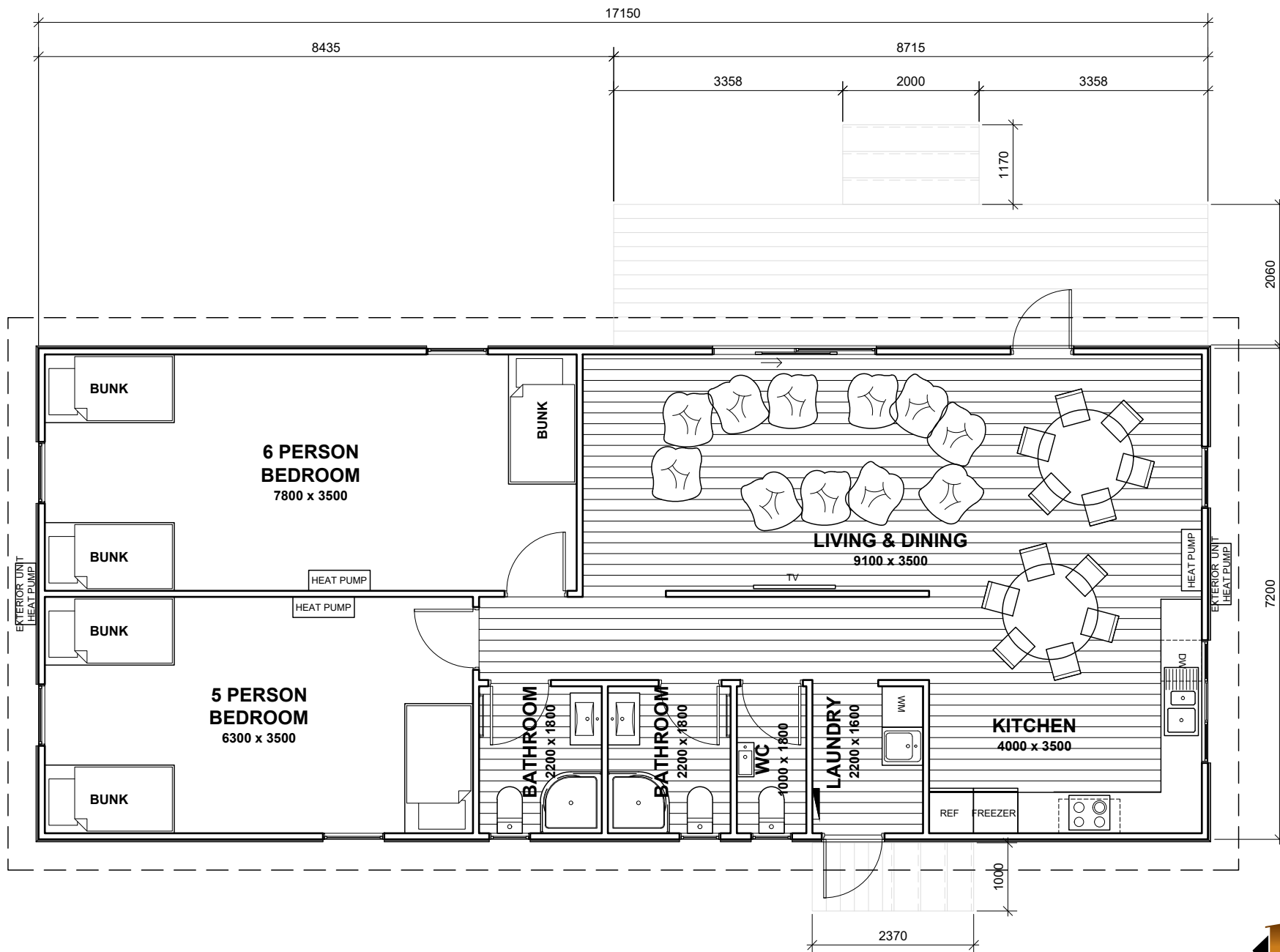


17.08m x 7.2m
 Floor Area 123m²
 11 Beds
 2 Bathrooms
 3 Toilets

WHITCOMBE.11

This is a great option for a self contained, all in one accommodation unit for up to 11 people and features 2 bunk rooms, a full bathroom, a large open plan kitchen, lounge, dining area and a laundry. At 7.2m wide x 17.1m long this unit will accommodate a large number of staff members or guests very comfortably, with plenty of living and socializing space.





(Images are artist impressions only. This plan is available as a mono, gable or hip rooflines.
 We can add or remove wing walls & adjust the cladding to suit your style. Plans are subject to change)

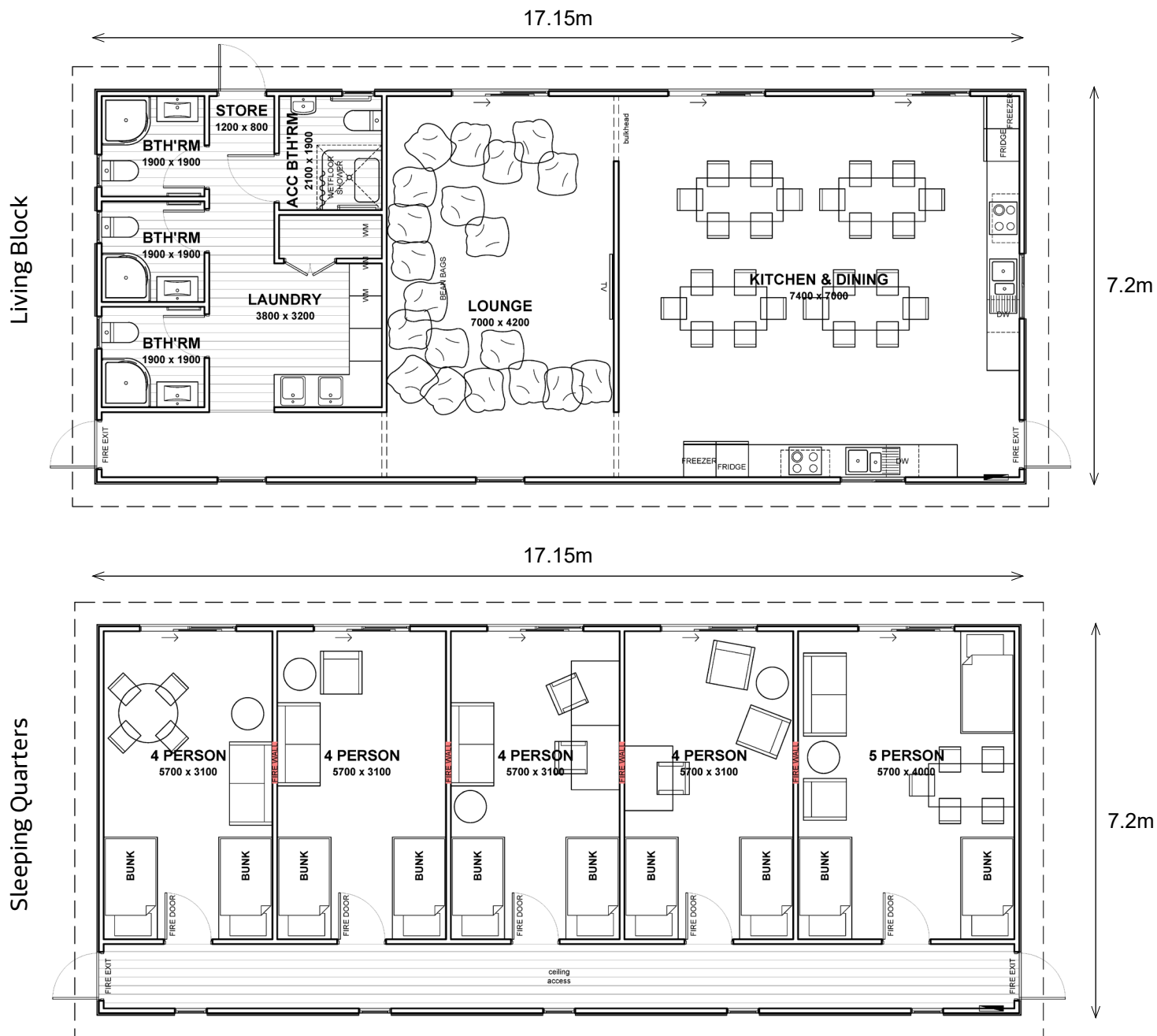


-  Floor Area 246m²
-  21 Beds
-  4 Bathrooms
-  4 Toilets

ARROWSMITH.21





This multi-unit accommodation package is a great option for up to 21 people and comprises of 1x Living Block & 1x Sleeping Quarters. The Living Block has a large open plan kitchen/dining area, a semi-detached lounge area, a large ablution area with 4x full bathrooms and a large laundry space. The Sleeping Quarters have 4x four-person bunk rooms and 1x five-person bunk room.





(Images are artist impressions only. This plan is available as a mono, gable or hip rooflines.
We can add or remove wing walls & adjust the cladding to suit your style. Plans are subject to change)

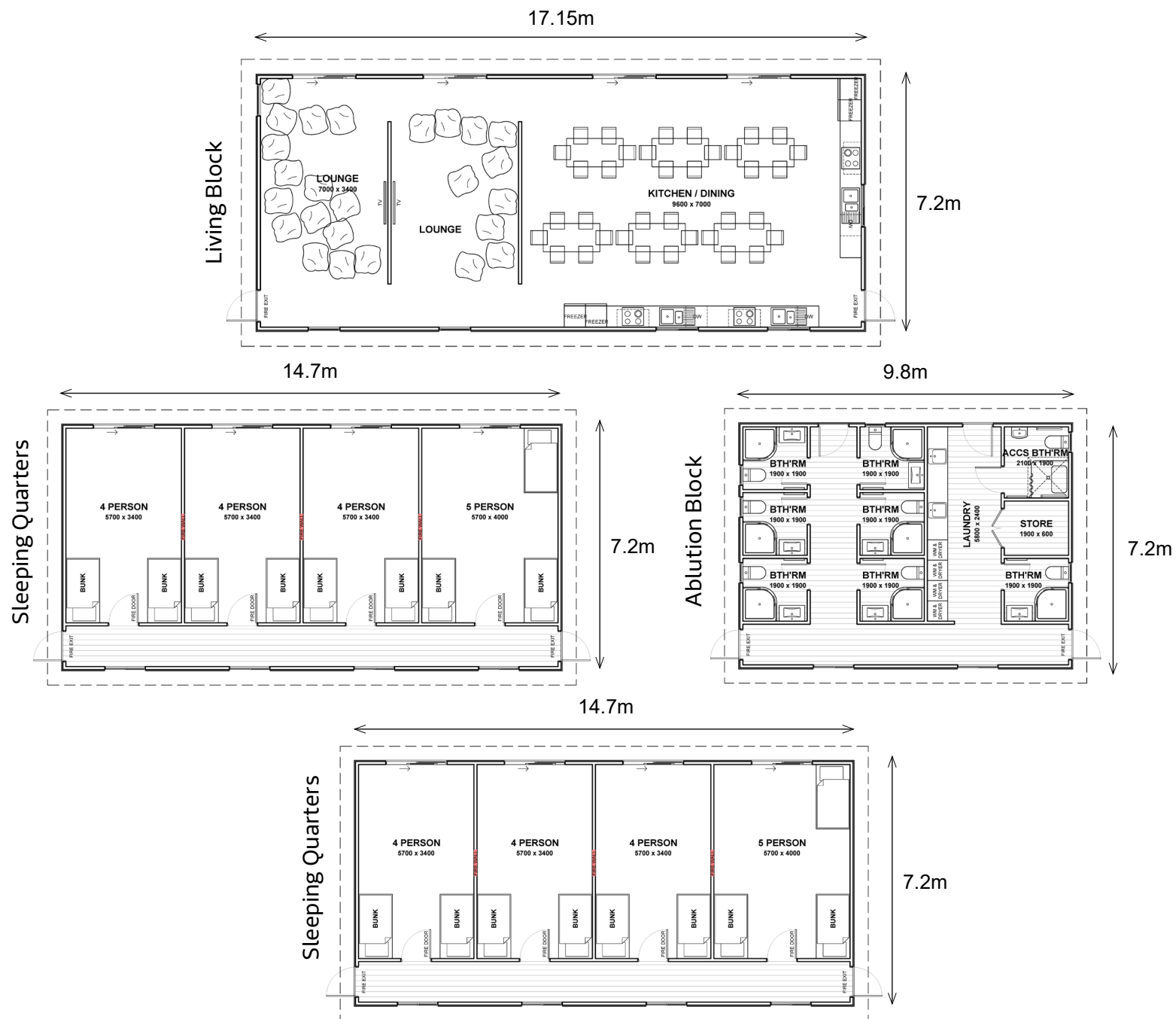


-  Floor Area 406m²
-  34 Beds
-  8 Bathrooms
-  8 Toilets

ARROWSMITH.34

This multi-unit accommodation package is a great option for up to 34 people and comprises of 1x Living Block, 2x Sleeping Quarters & 1x Ablution Block. The Living Block has a large open plan kitchen/dining area and two semi-detached lounge areas. Each Sleeping Quarter unit has 3x four-person bunk rooms and 1x five-person bunk room. The Ablution Block has 8x full bathrooms and an extra large laundry space.





(Images are artist impressions only. This plan is available as a mono, gable or hip rooflines.
We can add or remove wing walls & adjust the cladding to suit your style. Plans are subject to change)

ABOUT US

WHO WE ARE & WHAT WE DO

WHAT WE DO

We offer a smarter & more sustainable way of building homes which is fast & simple from start to finish. Our homes are built in a undercover factory environment, using clever construction techniques to maximize production efficiencies, reduce waste & achieve greater quality.

Buying a factory built home fully finished inside & out, ready for connection to services on your section is a great way to build a new home. You can make it your own using our large range of floor plans and refine the design to suit your needs. We'll take care of everything from house design to handover so you're working with one team throughout the whole process.



OUR STORY

South Peak Homes began in Westport late 2019 to provide high quality, factory built homes and create more local employment. We're a family owned & operated business with a large team of experienced staff who are driven by passion & purpose to supply quality affordable housing.

Our factory & show home is based in Westport, with more display homes soon to be sited in other areas. We're committed to supporting the West Coast community so when you work with us, you're helping to strengthen our small region.

We employ experienced, qualified people in all areas of the business & provide apprenticeship programmes for young carpenters to learn the building trade.



WHERE WE DELIVER

Our homes are prefabricated in our Westport factory and can be transported to most top of the south regions. The main areas we supply to are the West Coast, Nelson, Tasman, Canterbury and Marlborough.

Your new home will be delivered by a professional house moving company who will ensure a safe journey to your place. We have insurance cover in place for this transport process, for your peace of mind.

Not sure how to get a house on to your favourite piece of land? We can help you work out the best access way & house orientation in conjunction with the transport company, to make a south peak home fit.

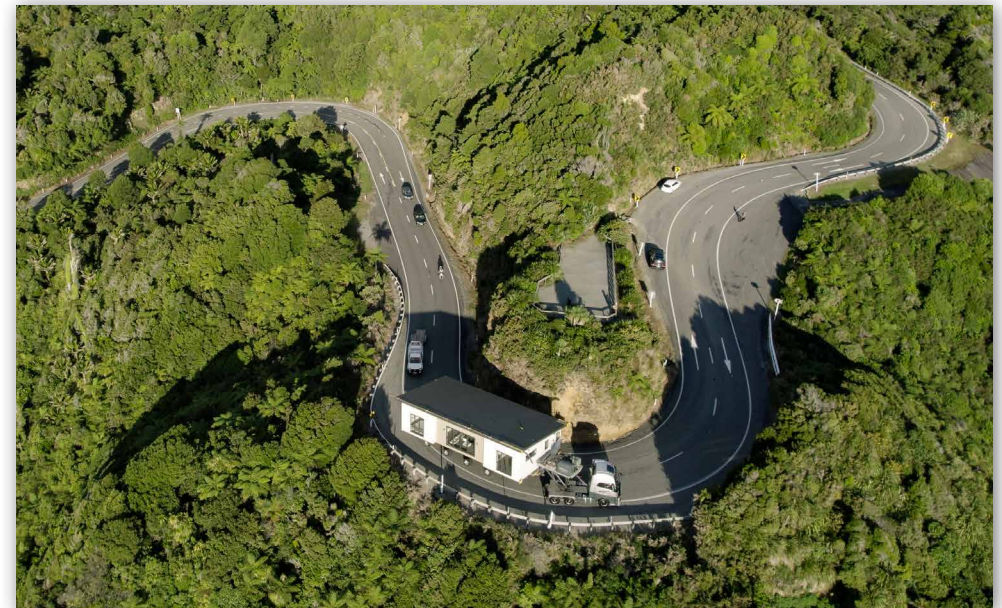


EXPERIENCED TEAM

We're a bunch of hard working kiwis with years of hands on practical experience & knowledge of the home building industry.

Our people have the power, passion & determination to deliver world class, factory built homes to you. We understand a house is not just a pretty structure, but an investment for the future & a haven for you and your loved ones.

With our team of experienced tradespeople, quality materials & proven product brands, you can trust us to deliver your home that will stand the test of time.



“

Tas village / MBIE Westport, West Coast

The Temporary Accommodation Services (TAS) Team at MBIE recently built two villages to provide temporary accommodation for flood affected residents of Westport.

South Peak Homes was one of the successful contractor tender respondents and built ten of the houses used at the two villages. Shannon and the South Peak Homes' team got onboard from the start in understanding the process and vision of what TAS was working to achieve.

They worked tirelessly alongside other contractors to ensure quality homes were built and the Westport flood affected households were able to move into warm, dry, healthy homes

”



A modern kitchen interior featuring white cabinetry, a stainless steel range hood, and a countertop with a sink and oven. Two pendant lights hang above the counter. The text "YOUR BENEFITS" is overlaid in large white letters.

YOUR BENEFITS

INNOVATIVE FEATURES & BENEFITS YOU GET

FAST, EASY BUILDING PROCESS

Our building process is fast & simple in a undercover factory where the wet weather can't slow things down, productivity is maximized & your site is not disrupted!

There'll be no delays for pouring a concrete slab, no waiting for timber framing to dry out, no loss of productivity when builders can't work and no travel charges to and from site everyday!

Build smarter & get into your new home sooner with South Peak Homes! We make it easy with our innovative construction methods, disciplined project management and great communication along the way.



AFFORDABLE, QUALITY HOMES

We'll ensure your new home is affordable and built to match your budget, without compromising the quality of materials, fittings or furnishings. Your home is built with approved, quality materials that meet the NZ building standards & constructed by our qualified tradespeople who are experts in their field.

The concept of factory built homes mean they are often more cost effective than on site builds, less risk & disruption for the owner, a higher level of quality control & faster build times can be achieved. Prefabricated at our place, delivered to your space.



MATERIAL & WORKMANSHIP GUARANTEES

All products & materials used in the construction of our homes are installed to the manufacturer's specification and in conjunction with NZS 3604 New Zealand building standards. Our homes are inspected at 5 stages of the building process by certified council inspectors to ensure code compliance is met at every step.

We offer a 12 months "defect free" guarantee on all materials & workmanship and will repair or replace anything required, if in accordance with our contract terms & conditions. All homes are covered by a 10 year structural building guarantee – enquire for more information.

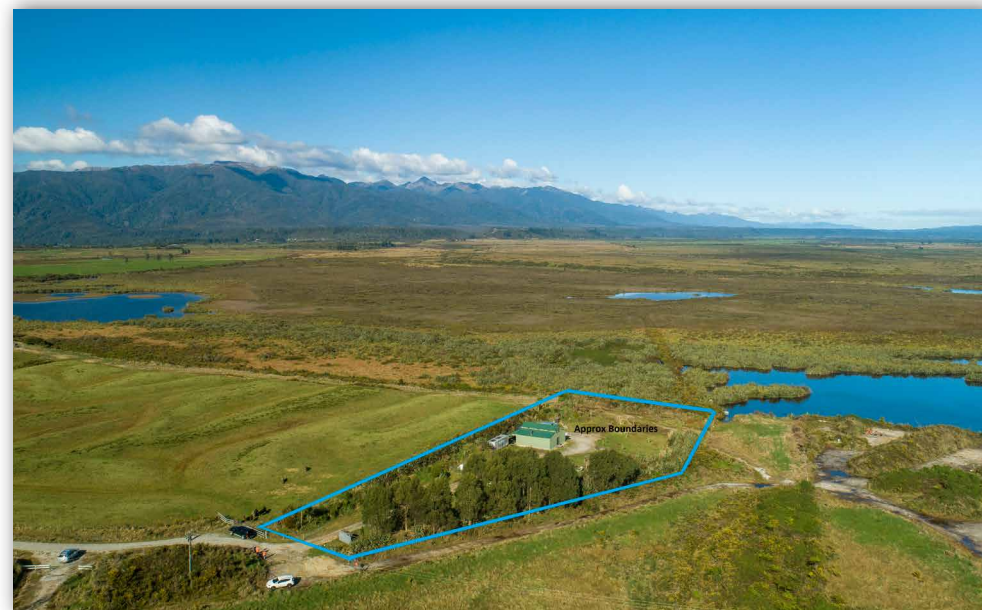


STOCK HOUSES & LAND

Are you needing a house in a hurry or a section? We've got options for you with houses in stock & land available for sections (subject to availability).

We'll help match your favourite house design to the right section that suits your needs. Talk to us about the land & houses we have available and arrange to view them. You could be in and living the dream or enjoying a return on your rental investment in no time!

If you have a section to sell, it can be more profitable with a house on it. We can help you market a house & land package to maximize the sale potential.



“

Dirk & Zoe Westport, West Coast

We're loving our new South Peak home which we were lucky enough to move into in November 2021, just in time before we welcomed our baby a week later. After deciding to move back to the West Coast and looking for somewhere to call home we were very pleased with the service and product that South Peak has delivered us.

After signing our contract we were able to watch our house be constructed, moved to site and move in, all within the space of one year. We were beyond grateful with the awesome service provided from the sales team, Michelle & Shannon and were super stoked when we were able to bring the start date of our build forward by 4 months which enabled us to be in our home before our baby arrived and Christmas of 2021.

We love the plan of our home and we're able to make some changes to the window and door layout that better suited our future deck etc. South Peak were happy to accommodate our requirements and color choices and finishes such as our tile splash back in the kitchen. The tapware is very high quality and the use of space in our house has used every inch of floor space well. We are pleased with the delivered product.

”



OUR PROCESS

YOUR NEW HOME FINISHED IN 7 SIMPLE STEPS



1 GET IN TOUCH

Our friendly New Home Consultants are ready to help you through the process of owning a high quality, factory built home. Contact us to discuss your new housing needs today!

Call: 0800 678 989

Email: sales@southpeakhomes.co.nz

Website: www.southpeakhomes.co.nz

Visit Show Home: 14 Bentham Street, Westport 7825

Show Home Open Hours:

Monday – Friday: 9am-5pm or by appointment

Saturday: By appointment only

Sunday: Closed for family day



2 SECURE YOUR FINANCE

If you haven't already arranged your finance, you will need to talk to your bank manager or accountant. For South Peak Homes to tailor a package that meets your needs, we will have to truly understand your budget. Dreams and hard work can easily be stamped out by not having pre-arranged finance and not understanding the true cost of building.

During the first consultation process, our New Home Consultant will assist you in choosing a base plan that works for you and discuss the location in mind. With this we will put together a letter of offer which includes an estimate for the construction of the house, site works and delivery of your home. House renders and plans will also be provided to help your finance provider ascertain the lending required.



3 HOME STARTER PACK

When you know what it costs and are ready to take the next step, the Home Starter Pack deposit of \$5000 including GST is required for us to prepare detailed concept drawings. This fee is deductible from the total contract price of your new home.

We'll visit your site to take levels, obtain an engineers report and you'll receive a site plan, floor plan, elevations, detailed pricing and full specifications for your project. Importantly, your name is penciled into our building schedule and your place in the queue is secured.

At this stage we'll identify any possible site challenges and will advise you accordingly. Any final design changes need to be made at this point.

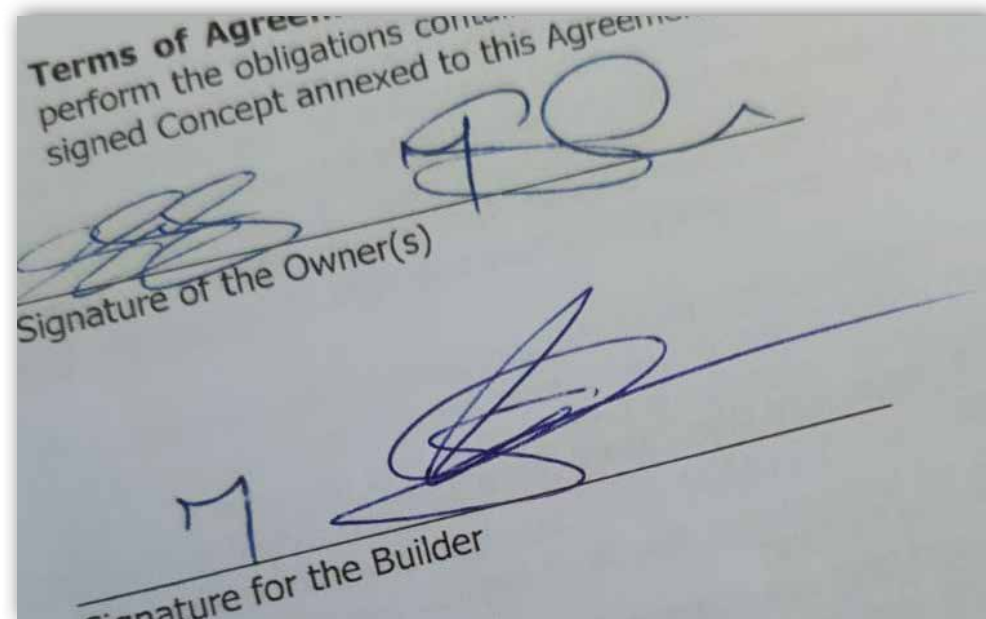


4 SIGN THE CONTRACT

Your decision to proceed with construction is now legally formalised. Both parties must sign the contract agreement, which outlines each party's responsibilities and includes the payment terms, completion date and the final specification schedule.

You will need your finance confirmed before signing the contract agreement and we can help you with this if you wish by speaking to your mortgage broker or banker on your behalf. It is important to understand that there is no provision to make any design changes after the contract has been signed.

Once the contract has been signed and the deposit paid, the full working drawings will be finalised and submitted to council to issue the building consent.



5 CONSTRUCTION BEGINS

It all happens quickly from here & your new home comes to life! Construction is now underway in our factory, and we'll be in regular contact throughout the build process with updates & photos to keep you informed.

Due to the hazardous nature of our production environment and for health & safety reasons, visits to our factory are strictly by appointment only during the main construction stages. A walk-through may be arranged with our new home consultant.



6 DELIVERY TO SITE

Once your new home is completed, it will be carefully transported on a truck to your section by a professional house moving company & placed on its piles. We have insurance cover for this transport process for your peace of mind.

Not sure how to get a house on your favourite section? We can help you work out the best access way & right house position, in conjunction with the transport company.

After your home is placed onsite & attached to the piles, any further works, including decks, steps and utility connections will be completed and Code Compliance Certificate will be obtained.



7 YOU MOVE IN

Your new home will be professionally cleaned inside & out, and our New Home Consultant will do a final inspection to ensure perfect presentation. We will personally hand over your keys and welcome you to your new home.

What a moment! It's time for you to live the dream & enjoy the benefits of a high quality South Peak Home. We'll keep in touch over the following months to ensure your new living experience is as great as possible.

Remember you're covered by a 12 month maintenance & defect free guarantee and a 10 year structural building warranty.



STANDARD PROGRESS PAYMENTS:

5% Payment Claim 1.

Deposit payable on signing the contract. The Home Starter Pack payments made are deducted from this claim.

25% Payment Claim 2.

Payable once consent is obtained & prior to commencement of construction. Your new home is now ready for the factory construction phase to begin.

40% Payment Claim 3.

Payable at lock-up stage. Your home is completed to lock-up stage in our factory.

20% Payment Claim 4.

Payable before leaving the factory. Your home is finished in our factory and ready for delivery. All interior/exterior painting, bathrooms & kitchen have been completed.

10% Payment Claim 5.

Payable on practical completion. All works have been completed and you're ready to take possession of your new South Peak Home.

Please note that the stages above are our standard contract payment stages. If these stages do not suit the conditions of your lender or your financial situation, don't let this put you off. In many instances we are able to offer an alternative package to cater for your needs and if necessary, we can finance your new home until it arrives on your site. Conditions apply.

10/80/10 PROGRESS PAYMENTS:

In some cases, due to your lending ability the bank may require more security around your lending. At a 2% finance fee South Peak Homes may choose to offer our 10/80/10 Progress Payment option as below.

10% Payment Claim 1.

Deposit payable on signing the contract. The Home Starter Pack payments made are deducted from this claim.

80% Payment Claim 2.

Payable once the Home is delivered to site and connected to the piles. In essence the home is completed awaiting service connections and other site works to gain CCC.

10% Payment Claim 3.

Payable on CCC being granted. All works have been completed and you are ready to take possession of your new South Peak Home.

Most of the major banks and building societies accept this progress payment structure although minor requirements vary between them.

CAREER OPPORTUNITIES

Want to work for a great company with great people? Find out what it takes to join our team of dynamic individuals who have a hard work ethic, a passion for serving our customers and are driven to succeed for their company.

We recruit based on positive, can-do attitudes before qualifications, skills or talent. The following skill sets and expertise is what we require.

- Licenced Builder Practitioners (LBP)
- Carpentry Apprentices
- Plumbers, Gas Fitters, Drainlayers
- Electricians, Painters, Plasters

If you're interested in applying for any role, please email your CV and a cover letter to sales@southpeakhomes.co.nz or call 0800 678 989.



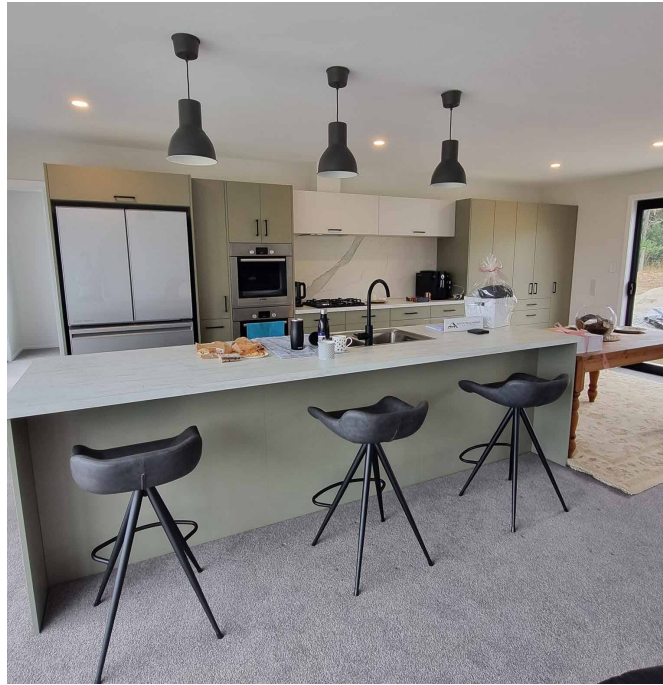
COMMUNITY SUPPORT

We care about the social and economic well-being of our local & global communities by giving back through financial & volunteer support to many different charities & projects.

Helping those in times of need, supporting emergency response organizations & providing assistance in many other ways is an important part of our social responsibility.

Care, compassion & support for our staff, customers and the wider community is reflected in our culture at South Peak Homes. We're passionate about doing the very best for everyone, even when it comes to building you a home!







WESTPORT SHOW HOME

VISIT OUR SHOW HOME TO DISCUSS YOUR NEEDS

Address:

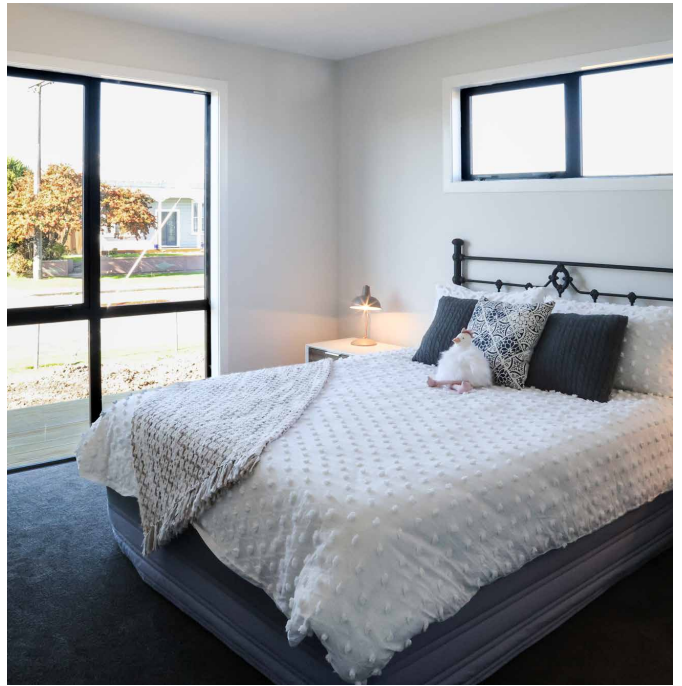
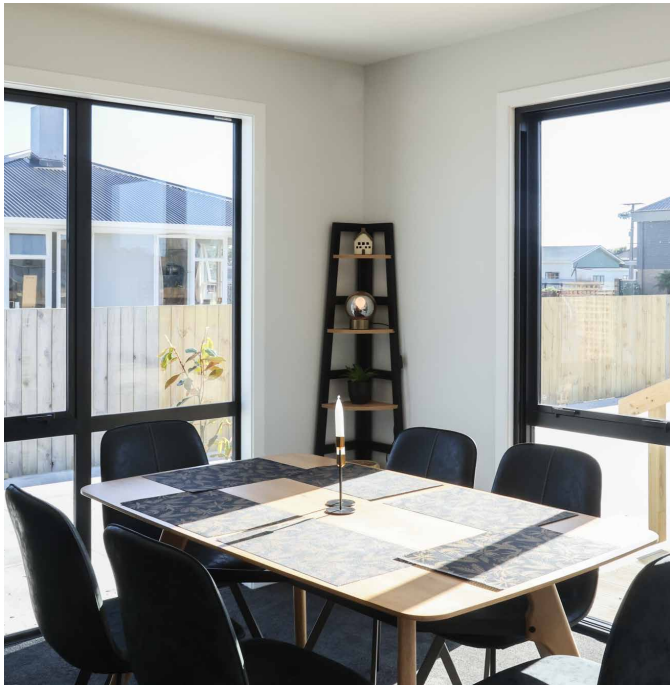
14 Bentham Street, Westport

Open Hours:

Monday to Friday: 9am - 5pm

Saturday by appointment only

Sunday closed for family day



STANDARD INCLUSIONS

Below is the standard specification for your new home;

- Construction insurance
 - Site-specific piling design & plans
 - Engineered trusses
 - LVL timber subfloor
 - 20mm water-resistant flooring
 - 90×45 LVL wall framing
 - RigidRAP rigid air barrier & bracing system
 - Metrapanel 25mm strand board ceiling & bracing system
 - Full interior clean & quality check prior to handover
 - 1 year defects warranty & 10 year new home warranty covering workmanship & materials
 - Colorsteel Endura roofing
 - Timber fascia
 - Marley Gutter System
 - White Marley Downpipes
 - Weathertex cladding options with cavity system
 - Interior & exterior paint
 - Thermally broken, double glazed, low LED, argon filled aluminium windows & doors
 - Sheet vinyl flooring in kitchen, laundry, toilet & bathrooms
 - Solution dyed nylon carpet on 11mm underlay in bedrooms & wardrobes
 - Panelform 18mm melamine kitchen doors & drawers
 - Freeform Select 38mm laminate benchtop
 - Stainless steel 1 ¼ sink and dual bin system in kitchen
 - Inbuilt oven, ceramic cooktop, rangehood and dishwasher
 - Glassart 900x750mm glass splashback
 - Flat Panel hollow core hinged doors with brushed chrome hardware
 - Shower, toilet, bath, vanities and plumbing accessories
 - LED lighting, pendant lights above island and exterior lights
 - Hot water cylinder
 - Heatpump
 - Laundry tub with integrated tap & cabinet
- * Upgrade options are available including coloured Marley downpipes, V Groove hollow core hinged doors, Inbuilt Pyrolytic Ovens, Induction Cooktops, built in Laundry Cabinetry, Beyond Tile on bathroom shower walls and Primestone benchtops. Talk to our New Home Consultants to discuss these options.*
- Please note, these specifications are subject to change at anytime. South Peak Homes responsibilities can vary depending on the client's needs. For full detailed specifications regarding any of our plans, please contact us to confirm.*



Notes:

A scenic view of a coastline. In the foreground, there is a grassy hill with some low-lying vegetation. To the right, a blue body of water is visible, with white waves breaking against a rocky shore. In the background, there are large, dark mountains under a clear, light blue sky. The image is overlaid with horizontal black lines, suggesting it is a page from a notebook or a template for a report.



VIEW OUR FLOOR PLANS ONLINE & GET A PRICE!