




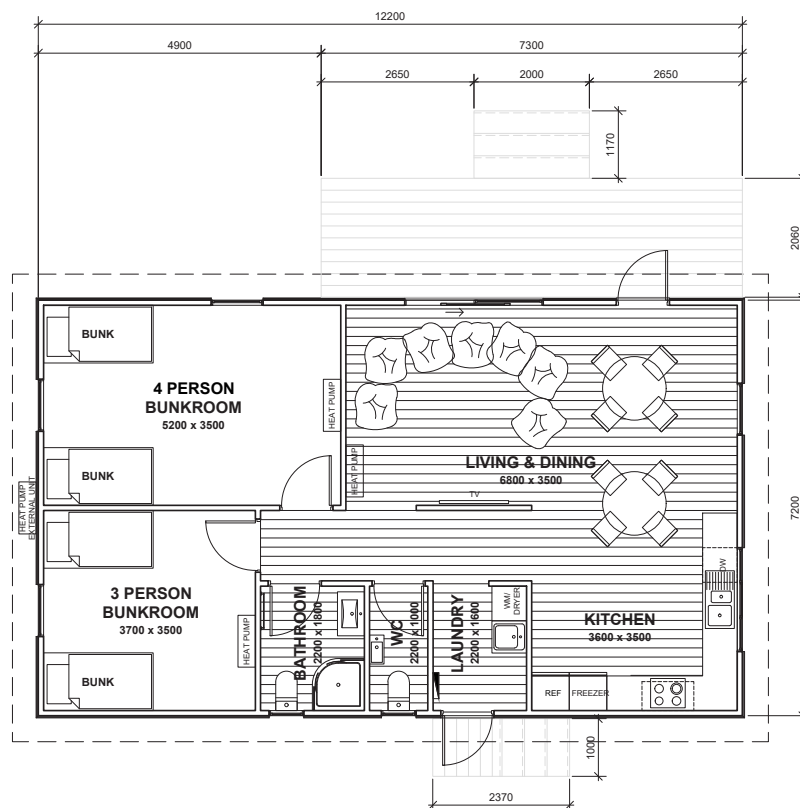


# WHITCOMBE.7

-  12.2m x 7.2m
-  Floor Area 88m<sup>2</sup>
-  7 Beds
-  1 Bathroom
-  2 Toilets

This is a great option for a self contained, all in one accommodation unit for up to 7 people and features 2 bunk rooms, a full bathroom, a large open plan kitchen, lounge, dining area and a laundry. At 7.2m wide x 12.2m long this unit will accommodate a small number of staff members or guests very comfortably, with plenty of living and socializing space.



**SOUTH PEAK HOMES**  
from our place to your space

(Images are artist impressions only & the landscaping is not included. This plan is available as a mono, gable or hip roofline. We can add or remove wing walls & adjust the cladding to suit your style. Plans are subject to change.)